



Department
for Environment
Food & Rural Affairs



The European Agricultural Fund for Rural
Development: Europe investing in rural areas.

RDPE Growth Programme

Business Development Handbook



Deadline for expressions of interest: midnight 31 January 2018

Search 'RDPE Growth Programme' on GOV.UK

With thanks to Benchmark Furniture, Berkshire and the Canal and River Trust, Ellesmere Yard for the images used in this document.

Contents

How Growth Programme grants work	04
----------------------------------	----

Chapter 1: About the RDPE Growth Programme	05
---	----

Chapter 2: About business development grants	08
---	----

Chapter 3: Who can apply	11
-----------------------------	----

Chapter 4: Preparing an application	14
--	----

Chapter 5: Funding and costs	18
---------------------------------	----

Chapter 6: How to apply	24
----------------------------	----

LEP Directory: grants in your area	29
------------------------------------	----

How Growth Programme grants work

Got an idea?

Make a plan

Every successful application starts with a good idea and a clear plan for how to make that idea a reality.

1



2 Read this handbook

Read the rest of this handbook to check you are eligible and that there is funding available in your local area.



Express an interest

Fill in an expression of interest (EOI) form and email it to RPA. Tell us about your project and how a grant will make it bigger and better.

3



4 Apply in full

If your EOI is endorsed, you can make a full application. If this is successful, you'll get a funding agreement to sign.



Get to work

With your funding agreement signed, you can start work on your project.

5



6 Claim your money

After you've paid for the work, you can claim your money.



Read the rest of this handbook to find out more, including our 'Top tips for applicants' on page 28

About the RDPE Growth programme

Includes:

- How the government manages these grants
- Government guarantees about funding after the UK leaves the EU

About the RDPE Growth Programme

The RDPE Growth Programme provides funding for projects in England which create jobs and growth in the rural economy.

Under the RDPE Growth Programme, there are grants for:

- business development
- food processing
- rural tourism infrastructure

The grants are funded by the European Agricultural Fund for Rural Development (EAFRD), which is part of the European Structural and Investment Funds (ESIF).

This handbook is about RDPE Growth Programme business development grants. It explains what the grants are for, who is eligible and how to apply.

To find information about the other grants, search 'RDPE Growth Programme' on GOV.UK.



Planning a project that will grow your business, create jobs or bring more money into the rural economy?

You might be able to apply for a grant to help you fund it.

You can only apply for one RDPE grant for a project, and only in one LEP area.

RDPE includes RDPE Growth Programme, LEADER, Countryside Productivity, Farming Recovery Fund and Cumbria Countryside Access Fund.

How the government manages these grants

The Rural Payments Agency (RPA) delivers the grants, working with ESIF sub-committees in Local Enterprise Partnerships (LEP) areas.

RPA's role is to assess applications for grants, with advice from the ESIF sub-committees.

LEPs are partnerships between public bodies and businesses. Their role is to decide local priorities for the grants – where money should be directed to give the most benefit locally.

RPA may at any time and without further notice:

- increase or decrease the grant funding allocated to each LEP area
- support more or fewer projects, depending on the number and quality of applications
- change the date these grants close to applications

Read pages 31 to 59 for the LEP areas that are offering these grants. Use the map on page 29 to find your LEP area.

Government guarantees about funding after the UK leaves the EU

The government has confirmed that it will guarantee funding for RDPE Growth Programme grants if these are agreed and signed before the UK's departure from the EU, even if the grant agreements continue after we have left the EU, subject to projects meeting the following conditions:

- they are good value for money
- they are in line with domestic strategic priorities

Please read the priorities for funding on page 15.

Deadlines: You should aim for your project to be finished and paid for, and complete grant claims submitted, by 31 March 2019. The final date to submit complete grant claims is 31 December 2019.

2

About business development grants

Includes:

- Who can apply
- What the grants are for
- How much money you can apply for
- Examples of projects

About business development grants

An overview of the business development grants – who can apply, what the grants will fund and how much funding is available.

Who can apply

Small rural businesses – new or existing. That includes farmers who want to diversify into non-agricultural activity. See page 12 to check if you are eligible.

What the grants are for

To help rural businesses grow and create more jobs.

Grant funding can help pay for:

- constructing or improving buildings
- buying new equipment and machinery

How much money you can apply for

Normally they are for a minimum of £35,000, though this will vary in some LEP areas. Check the entry for your LEP area on pages 31 to 59. The amount you can apply for depends on the size of your business and where it is located.

You won't automatically get a grant.

When you apply for a grant, you're competing with other applicants in your LEP area.

All applications are assessed to see how well they fit the priorities for funding and which projects provide best value for taxpayers' money.

Examples of projects

Here are some examples of the kinds of projects which may be eligible for a business development grant.

Investment in equipment



A small rural business that makes furniture will invest in 2 new machines. This will create 2 new full-time jobs. It also means the business can use new, high-precision techniques, and so will create higher quality products. This investment will open up new markets locally, nationally and overseas.

Farm diversification



A farm business plans to diversify by setting up a metal fabrication business. The business has made some gates and railings in the farm workshop, and has an agreement from a local building contractor to supply gates and railings for building developments. This will build on the skills already in the farm business, and the business will employ one new skilled person on a full-time basis.

Who can apply

Includes:

- Check the size of your business
- What is a 'full-time equivalent' (FTE) employee?
- Who can't apply

Who can apply

Only small and micro businesses (and farmers who are diversifying) are eligible to apply, and your project must be in a rural area.

These grants are for:

- small businesses or micro businesses, including social enterprises in rural areas
- farmers (or members of the farm household) diversifying into non-agricultural activities

Check the size of your business

The size of the business depends on the number of full-time equivalent (FTE) employees it has and its financial performance.

The table below shows what qualifies as a small or micro business.

Business Size	Number of FTE employees		Annual turnover or balance sheet total
Small	fewer than 50	and	€10m (about £7.9million) or less
Micro	fewer than 10	and	€2m (about £1.6million) or less

What is a 'full-time equivalent' (FTE) employee?

Anyone who works a minimum of 30 hours per week counts as 1 FTE employee. A person working 30 hours a week for 3 months of the year would be 0.25 FTE employee.

FTEs include business partners and directors. If a business partner or director works more than 30 hours per week they still count as 1 FTE employee.

Is your business 'linked' to other businesses

If your business is linked to other businesses, this might mean you exceed the business size requirements and the funding limits.

The most common circumstances under which businesses are considered to be linked include:

- one business holds a majority of the shareholders' or members' voting rights in another business
- one business is entitled to appoint or remove a majority of the administrative, management or supervisory body of another
- a contract between the business, or a provision in the memorandum or articles of association of one of the businesses, enables one to exercise a dominant influence over the other
- one business is able, by agreement, to exercise sole control over a majority of shareholders' or members' voting rights in another

New businesses can also apply.

If you have an idea, a business plan and potential private funding for your project, you can apply for a grant.

Who can't apply

The following are not eligible for the grants:

- non-departmental public bodies or Crown bodies
- members of Producer Organisations under the [Fresh Fruit and Vegetables Aid Scheme](#) who have a grant for the same project through their operational programme document
- projects that are carried out only to meet a legal requirement

Not sure if you are eligible? Contact RPA.



03000 200 301



GPEnquiries@
rpa.gsi.gov.uk

Preparing an application

Includes:

- National priorities for funding
- Local priorities for funding
- How we assess applications
- EOI - what we look for
- Full application - what we look for

Preparing an application

RPA will assess all applications. We're looking for evidence of a sound business plan and for projects that meet the priorities for funding.

When you apply for a grant, you're competing with other applicants in your area.

We're looking for projects that best meet the national and local priorities for funding, and that are good value for taxpayers' money. If you can show this clearly in your application, you're more likely to get a grant.



National priorities for funding

Your project is more likely to get a grant if it achieves at least 2 of the below.

Create jobs	Creates new, higher-skilled or higher-paid jobs Creates at least 1 FTE job for every £30,000 of grant funding
Grow your business	Increases the turnover and profitability of a business
Improve productivity through innovation	Introduces new techniques, equipment or processes to a business to make it more productive
Open new product markets	Helps your business sell goods or services to new customers or markets
Export	Helps your business access export markets

Local priorities for funding

Local priorities are set by the ESIF sub-committees. Check the LEP area directory on pages 31 to 59 to see the priorities for your LEP area.

How we assess applications

Application is in 2 stages. First, you must submit an 'expression of interest' (EOI) form. If we approve your EOI, we will invite you to submit a full application.

We assess your application at both stages. Read 'How to apply' on page 24 for more information.

EOI – what we look for

We use the information on the EOI form to check that both the applicant and project are eligible.

Then we assess how well your project meets the national and local priorities for grants. To do this, we look at question 30 of the EOI (the 'strategic fit') and score and rank it against other applications.

It will help your application if you explain your project clearly. Tell us exactly what you're doing, why it's good for your business, how and where you're doing it and who will benefit from it.



Full application – what we look for

If you're invited to submit a full application, we'll ask for more information to further assess your project and your business. This table will give you an overview of what we assess.

Strategic fit	<p>How well the project meets the national and local priorities for funding.</p> <p>How the project will impact the environment.</p> <p>That the project does not disadvantage anybody in terms of characteristics such as ethnicity, disability, age and gender.</p>
Value for money	<p>How the project costs represent value for money.</p> <p>The amount of grant required to deliver the outcomes and outputs, including jobs.</p> <p>What difference grant funding will make, compared to what would happen without grant funding.</p>
Need and demand	<p>Why grant funding is required for the project.</p> <p>There is a clearly identified market need for the project.</p> <p>The impact the project has on other businesses, both positive and negative.</p>
Financial viability	<p>The current financial viability of your business.</p> <p>How the project may impact on your existing business operations.</p> <p>How you will fund the project until the grant is claimed.</p> <p>How the business will benefit from the project financially.</p>
Delivery and sustainability	<p>Whether the project will be delivered in budget and on time.</p> <p>That the right skills and resource are in place to deliver the project successfully.</p> <p>How project outputs and other benefits will be monitored and recorded.</p> <p>That risks to project delivery have been identified and how they will be mitigated.</p>

5

Funding and costs

Includes:

- How much funding is available
- Paying for the project
- Eligible costs
- Costs which are not eligible

Funding and costs

You can use grant funding to cover a certain percentage of some project costs – some costs are not eligible.

How much funding is available

The grants will normally be above £35,000, though this will vary in some LEP areas. Check the LEP directory on page 29 to see what the minimum is in your LEP area.

The grants can only fund a certain percentage of eligible costs and there is a maximum percentage that applies. You can use other public money to pay for eligible costs – but only up to that maximum percentage.

Above the maximum percentage, all the money you use to pay for eligible costs must be from private sources (like savings or a bank loan).

The business development grants will normally cover up to 40% of the project's total eligible costs.

If the minimum grant is £35,000, the minimum total eligible cost of a project would therefore be £87,500.

The maximum grant per project is €200,000 (approximately £170,000 at current exchange rates).



Has your project already had some public funding?

When you apply, we'll ask you to tell us if you have had any funding from the EU or other public sources, and if it was awarded under 'industrial de minimis'.

If so, we might need to limit the amount of the funding you can get, to comply with the EU state aid industrial de minimis rules.

Paying for the project

Grants are paid in stages, in arrears. They can only be claimed after the work being claimed for is finished and has been paid for.

Grants are paid in arrears, in agreed stages. We expect you to make a maximum of 3 claims over the course of the project.

You must show that you have sufficient funds to pay for the project costs until you get the grant payments.

Hire-purchase or leased items must be paid off before you claim

If you buy an item for the project using lease purchase or hire-purchase, you must own this outright before you can claim any grant money towards it.

That means that, before you claim the grant, you must:

- pay all of the instalments
- show that the title has passed to you

Otherwise you will not be able to include these costs in your claim.

Do not start work, incur costs or place an order before your grant agreement has been signed.

This will potentially make your whole project ineligible.

Eligible costs

The grant can be used to pay for up to 40% of the following costs:

- constructing or improving buildings
- buying new equipment and machinery

The following costs are also eligible, if they form part of a larger project being funded:

- architects, engineer or consultant fees for the project (as long as these don't add up to more than 15% of the project's total eligible costs)
- buying or developing a dedicated piece of computer software (but not an off-the-shelf piece of software like Microsoft Office)
- patents, licences, copyrights or trademarks
- energy-saving and resource efficiency equipment



How much funding do you need?

Just because you can ask for up to 40% grant funding doesn't mean you should.

Asking for less grant money will make your project better value for taxpayers' money.



Costs which are not eligible

The following are not eligible for the grants (this list is not exhaustive).

General costs:

- any costs incurred before the project start date shown in the grant funding agreement
- contingency costs
- the cost of getting any permissions or consents, such as planning permission
- any items which you have already had EU or national funding for (or intend to get EU or national funding for)
- relocation costs – if the business needs to relocate in order to expand, it can only apply for funding for the cost of the expansion
- costs associated with the provision of housing
- marketing and promotion

Buildings, land and equipment costs:

- purchase of land, whether or not this land is built on
- repairs and maintenance of existing buildings, equipment and machinery
- like-for-like replacement of existing items (such as buildings, equipment and machinery)
- purchase of machinery or equipment that will not be on the asset register of the business 5 years after completion of the project
- the cost of moveable fittings – like soft furnishings, beds, tables, chairs, cutlery and crockery, curtains, televisions and audio equipment
- renewable heat and energy systems covered by the Renewable Heat Incentive (RHI) or Feed-In Tariffs (FITs)

Business running costs:

- salaries and running costs of the business
- in-kind contributions (this means the value of donated work or services) such as the cost of using your own labour, vehicle and office space
- recurring licence fees, subscriptions and service charges
- computers, software and printers used in the general running of the business, like processing orders or accounts
- mobile phones

Agricultural business costs:

- buildings, machinery and equipment used for growing and harvesting agricultural and horticultural products
- standard agricultural equipment and inputs like animals and crops
- the cost of agricultural production rights and payment entitlements
- developing or setting up agricultural businesses

Financial costs:

- bad debts
- advance payments
- insurance policy costs
- working capital
- financial charges, such as bank charges, fines and interest
- costs connected with a leasing contract, such as a lessor's margin, interest refinancing costs, overheads and insurance charges
- reclaimable VAT
- pension provision

To check if a cost is eligible call the Defra Rural Services helpline on 03000 200 301 or email GPEnquiries@rpa.gsi.gov.uk

6

How to apply

Includes

- The EOI form
- What happens after you submit an EOI form
- Full application
- If you are offered a grant
- Top tips for applicants

How to apply

What you need to do to begin your application, and an overview of the information you must provide.

Application is in 2 stages. First, you must submit an ‘expression of interest’ (EOI) form. If we endorse your EOI, we will invite you to submit a full application.

RPA will assess your application at both stages. Only the highest-scoring applications will be successful.

The Expression of Interest (EOI) form

You can find the EOI form on GOV.UK – search ‘RDPE Growth Programme EOI’.

Deadline

We must receive your EOI before **midnight on 31 January 2018** – if we get it after this deadline, we will reject it.

On the EOI, you’ll need to give us some information about your business, including:

- whether it’s linked to any other businesses
- turnover and balance sheet total from the most recent financial accounts
- details of any previous public funding your business has had

You’ll also need to tell us about your project:

- what the objectives are and what the outputs will be
- an overview of the costs
- important dates for the project
- how it fits with the local and national priorities for funding
- the market demand for your project and its impact on similar businesses

How to submit your form

Email your form to:

growthapps@rpa.gsi.gov.uk

We can only accept forms that are:

- sent by email
- Microsoft Excel documents saved in the 1997-2003 XLS format

We cannot accept any other format – including PDF documents, scanned documents, hard copy printed applications or hand-written applications.

Email your EOI from the email address you specify in section 5 of the EOI form. If an agent sends the form on your behalf, that address must be copied into the email.



Provide an email address that you check regularly.

We will use the email address you put in section 5 of the form as our main way of contacting you.

What happens after you submit your EOI

After you submit the form, you'll get an automatic email to say we have received it. We will then assess your EOI and let you know whether or not you will be invited to submit a full application.

We aim to give you a decision on your EOI within 30 working days.

If an application is unsuccessful

If your EOI is unsuccessful, RPA will send you a letter with the reasons.

To find out how to appeal against the decision, read the 'How to appeal' section of the RPA complaints procedure page on GOV.UK.

Full application

If you're invited to submit a full application, we'll send you the relevant form and advice about how to fill this in.

The form asks for full details about you, your business and your project, including:

- final project costs
- supplier details
- key dates
- proposed project outputs

You'll need to send us:

- supporting documents appropriate to the project (such as market research, customer surveys, or industry reports)
- business accounts for last 3 financial years (unless you are a new business)
- relevant permissions and consents
- 3 quotes for each item to be purchased
- evidence that you can cover the project costs before claiming the grant in stages

There is potentially a lot of information, evidence and paperwork to collect.

It can take 2 - 3 months for you to prepare your full application, possibly longer if you need planning permission.

You'll be given a named contact at RPA to support you and answer questions.

You'll also be invited to attend a workshop, where RPA will explain the application process in more

detail and answer any initial questions you have.

Before you send us your full application, you'll need to be registered on RPA's Rural Payments service and have a Single Business Identifier (SBI) number.

We aim to give you a decision on your full application within 60 working days.

If you are offered a grant

If you're offered a grant, we'll send you a grant funding agreement for you to sign. This will set out the legal terms and conditions of the grant, including:

- the amount of the grant
- the outputs we've agreed for your project
- which suppliers you're using

If you need to change anything in the grant funding agreement over the course of the project, you need to get written agreement from RPA first. If not, we could terminate your agreement and reclaim any grant we've already paid.

You'll get more information and help with this if you're offered a grant.

Top tips for applicants



Before you start your application, here are some important reminders...

Jobs + growth + rural

The main aim of the RDPE Growth Programme is to create jobs and growth in the rural economy. Tell us how your project will help do this.

Sell us your idea

Explain really clearly what your project does and how it will benefit the economy. It's hard for us to justify giving you a grant if we don't understand your project.

Don't ask for the full amount if you don't need it

Just because you can get (say) 40% of your costs covered, don't ask for that amount if you don't need it. As long as you stay below the maximum, you can tell us what grant rate you want. (It's better value for taxpayers' money.)

Show us what the funding will mean to the success of your project

We're obliged to invest public money carefully. We're looking for viable, growing businesses. If you can show us that your project is good value for money, and that you're planning to use the grant money to improve your project, you're more likely to get the grant.

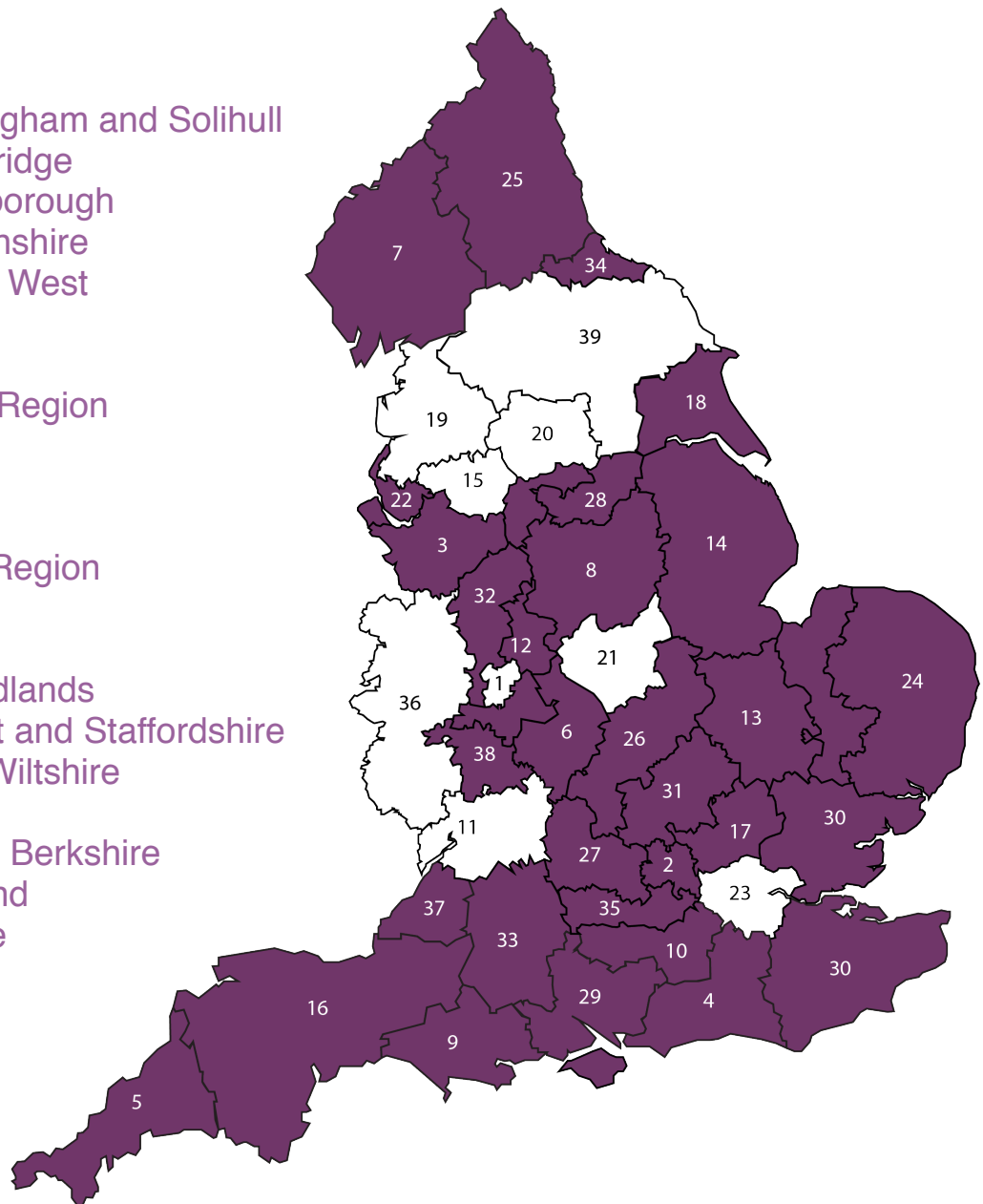
Do the market research

You have to show that there is real demand for what you want to do, or you're unlikely to get a grant.

LEP directory: grants in your area

LEPs offering business development grants:

- 2 Buckinghamshire Thames Valley
- 3 Cheshire and Warrington
- 4 Coast to Capital
- 5 Cornwall and the Isles of Scilly
- 6 Coventry and Warwickshire
- 7 Cumbria
- 8 D2N2
- 9 Dorset
- 10 Enterprise M3
- 12 Greater Birmingham and Solihull
- 13 Greater Cambridge
Greater Peterborough
- 14 Greater Lincolnshire
- 16 Heart of South West
- 17 Hertfordshire
- 18 Humber
- 22 Liverpool City Region
- 24 New Anglia
- 25 North East
- 27 Oxfordshire
- 28 Sheffield City Region
- 29 Solent
- 30 South East
- 31 South East Midlands
- 32 Stoke-on-Trent and Staffordshire
- 33 Swindon and Wiltshire
- 34 Tees Valley
- 35 Thames Valley Berkshire
- 37 West of England
- 38 Worcestershire



Grants in your area

Use this directory to find out which LEP areas are participating and what funding is available in your local area.

How to use this directory

- Check the map on the previous page to see if your LEP area is offering a business development grant
- Find the entry for your LEP area (these are listed alphabetically)
- Each entry has a link to the LEP area rural map. Use this to check if your project is in a rural area
- There is also a link to the LEP area Growth hub website. Growth hubs help businesses access local and national advice. This makes it easier for them to find the help they need to grow their businesses.
- Read the whole entry carefully to find out:
 - minimum and maximum grants available
 - types of eligible projects and businesses
 - local priorities
- Read the documents at the links shown in the 'Further reading' section

Deadlines for project completion

You should aim for your project to be finished and paid for, and complete grant claims submitted, by 31 March 2019

The final date to submit complete grant claims is 31 December 2019.

Buckinghamshire Thames Valley

LEP area	Buckinghamshire Thames Valley	Call reference number	02RD17BS0004
LEP area Growth hub website	https://bbf.uk.com/		
LEP area rural map	https://www.gov.uk/government/uploads/system/uploads/attachment_data/file/270512/Buckinghamshire_LEP_full_class.jpg		
Initial amount allocated	£500,000	Number of projects funded in LEP area	3 to 14
Minimum grant	£35,000	Maximum grant	€200,000, approximately £170,000
Local priorities			
<p>Priority will be given to projects that:</p> <ul style="list-style-type: none"> • enable farming business to diversify into non-agricultural activities such as <ul style="list-style-type: none"> • on-farm retail • development of leisure, recreational and sport facilities • create new jobs, particularly higher skilled jobs above the current average skill level of jobs in the applicant business • create niche products and services linked to quality local food, culture, heritage and rural crafts/assets • adopt new techniques and processes that increase the productivity of the business start or increase exporting of products by the applicant business 			
Further reading			
<p>Projects we are looking to support will be in line with; Buckinghamshire's ESIF Strategy visit: http://www.buckstviep.co.uk/download/112</p>			

Cheshire and Warrington

LEP area	Cheshire and Warrington	Call reference number	03RD17BS0003
LEP area Growth hub website	http://candwgrowthhub.co.uk/		
LEP area rural map	https://www.gov.uk/government/uploads/system/uploads/attachment_data/file/270516/Cheshire_and_Warrington_LEP_full_class.jpg		
Initial amount allocated	£434,000	Number of projects funded in LEP area	3 to 15
Minimum grant	£35,000	Maximum grant	€200,000, approximately £170,000
Local priorities			
<p>Priority will be given to projects that:</p> <ul style="list-style-type: none"> • create new or expand existing micro and small businesses in rural areas from the priority sectors for support in the Cheshire and Warrington LEP area as follows: <ul style="list-style-type: none"> • Advanced manufacturing • Engineering and maintenance where there is a clear demand for capital investment, such as a workshop extension with fixed machinery • introduce new products to the market, or develop existing products for a new market. • allow the applicant business to start exporting or increase the volume of products exported. • enable farming businesses to diversify into non-agricultural activities. • demonstrate clear links to the Cheshire and Warrington Local Enterprise Partnership's strategic objectives for delivering jobs and growth in Cheshire and Warrington. • use technology to achieve sustainable productivity growth in manufacturing and processing in rural businesses. 			
Further reading			
<p>ESIF Strategy http://www.871candwep.co.uk/investing-in-the-area/european-structural-and-investment-funds/ Strategic Economic Plan http://www.871candwep.co.uk/</p>			

Coast to Capital

LEP area	Coast to Capital	Call reference number	04RD17BS0002
LEP area Growth hub website	http://www.c2cbusiness.org.uk/		
LEP area rural map	https://www.gov.uk/government/uploads/system/uploads/attachment_data/file/270521/Coast_to_Capital_LEP_full_class.jpg		
Initial amount allocated	£835,422	Number of projects funded in LEP area	5 to 11
Minimum grant	£75,000	Maximum grant	€200,000 – approximately £170,000
Local priorities			
<p>Priority will be given to projects that:</p> <ul style="list-style-type: none"> • create new and expand existing micro and small businesses in rural areas in the following Coast to Capital priority sectors and their direct supply chains creating new jobs and growth of the applicant business: <ul style="list-style-type: none"> • manufacturing of wood-based products and innovative products for the construction industry, including timber framed construction • sustainable manufacturing where low carbon manufacturing methods and technologies are being applied. • advanced manufacturing • health and Life Sciences • creative, Digital and Information Technology (CDIT) • financial Services • environmental technologies • tourism • construction • introduce and implement innovation in the applicant business, • manufacture by the applicant business of new products • allow the applicant business to sell into new markets at home and abroad. 			
Further reading			
<p>ESIF Strategy, version January 2014 is at http://www.coast2capital.org.uk/images/CtoC_ESIF_Strategy_Final_JAN14.pdf</p> <p>Coast to Capital's Rural Statement can be found at http://www.coast2capital.org.uk/images/CtoC_ESIF_RuralStatment_JULY16_FINAL_Proofed.pdf</p>			

Cornwall and the Isles of Scilly

LEP area	Cornwall and the Isles of Scilly	Call reference number	05RD17BS0002
LEP area Growth hub website	https://www.ciosgrowthhub.com/		
LEP area rural map	https://www.gov.uk/government/uploads/system/uploads/attachment_data/file/270523/Cornwall_and_Isles_of_Scilly_LEP_full_class.jpg		
Initial amount allocated	£1,350,000	Number of projects funded in LEP area	8 to 135
Minimum grant	£50,000 in Cornwall and £10,000 on the Isles of Scilly	Maximum grant	€200,000 approximately £170,000
Local priorities			
<p>Micro and small business make up over 95% of business in Cornwall and the Isles of Scilly. Improvement in the growth and the productivity of micro and small businesses could have a significant effect on the economy of the LEP area.</p> <p>Priority will be given to projects that</p> <ul style="list-style-type: none"> • generate growth through an increase in turnover and jobs in the applicant business • improve productivity in the applicant business • create jobs that are paid above the average annual salary for Cornwall and the Isles of Scilly (£17,389) • enable farm businesses to diversify into non-agricultural activities, including <ul style="list-style-type: none"> • creation of office space/workspace to fulfil evidenced local need • development of craft and handicraft activity • leisure, recreational and sport activities • create new and expand existing micro and small businesses in rural areas • allow the applicant business to start exporting products, or increase the volume of products exported • reduce the need for imports • invest in equipment, technologies or processes, which can include commercialising academic research or trials, to make new or higher quality products • invest in, equipment, technologies or processes to reduce waste, where this forms part of the project <p>Applications need to show the local need and demand for the project that will grow the market overall and not simply take trade from other businesses.</p> <p>Tourism accommodation of any type will not be supported in the final version.</p>			
Further reading			
<p>This call fits with the Cornwall and Isles of Scilly Integrated Territorial Development Strategy (ESIF Strategy). This sets out how C&IoS will use ESIF funds to increase productivity and competitiveness of businesses in the area.</p> <p>See http://www.cioslep.com/assets/file/Cornwall%20and%20IOS%20ITI%20Strategy.pdf for details.</p> <p>This call is also set in the context of the Strategic Economic Plan for http://www.cioslep.com/assets/file/LEP%20Strategic%20Economic%20Plan%20FINAL.pdf and the Strategic Economic Plan for the http://www.scilly.gov.uk/sites/default/files/events/Island%20Futures%20final.pdf</p>			

Coventry and Warwickshire

LEP area	Coventry and Warwickshire	Call reference number	06RD17BS0004
LEP area Growth hub website	http://www.cwgrowthhub.co.uk/		
LEP area rural map	https://www.gov.uk/government/uploads/system/uploads/attachment_data/file/270524/Coventry_and_Warwickshire_LEP_full_class.jpg		
Initial amount allocated	£1,500,000	Number of projects funded in LEP area	2 to 10
Minimum grant	£50,000	Maximum grant	€200,000, approximately £170,000
Local priorities			
<p>Priority will be given to projects that</p> <ul style="list-style-type: none"> • create new or expand existing rural micro and small businesses in following priority sectors for the CWLEP area: <ul style="list-style-type: none"> • advanced manufacturing and engineering • digital and ICT • intelligent mobility • food and Drink Processing • enable farming businesses to diversify into non-agricultural activities • increase productivity of the applicant business. • allow the applicant business to start exporting products, or increase the volume of products exported. • introduce new technologies, techniques or processes • create or support 'local food and drink' initiatives by processing local produce. 			
Further reading			
<p>Coventry and Warwickshire ESIF Strategy (updated February 2016) http://www.cwlep.com/sites/default/files/european_structural_and_investment_funds_esif_strategy_2016.pdf</p> <p>Coventry and Warwickshire Strategic Economic Plan (updated August 2016) http://www.cwlep.com/sites/default/files/cw_lep_strategic_economic_plan_2016.pdf</p>			

LEP area	Cumbria	Call reference number	07RD17BS0003
LEP area Growth hub website	http://www.cumbriagrowthhub.co.uk/		
LEP area rural map	https://www.gov.uk/government/uploads/system/uploads/attachment_data/file/270526/Cumbria_LEP_full_class.jpg		
Initial amount allocated	£928,247	Number of projects funded in LEP area	6 to 26
Minimum grant	£35,000	Maximum grant	£170,000
Local priorities			
<p>Priority will be given to projects that:</p> <ul style="list-style-type: none"> • support the diversification of farm businesses into non-agricultural activities. Where these are for rural workspace, workshops or on-farm retail, there must be evidence of the need and demand for these projects. • support innovation within rural businesses including; <ul style="list-style-type: none"> • adoption of new processes and techniques. • increase business productivity. • creation of new products and services. • allow the applicant business to start exporting products or increase the volume of products exported. • create 1 FTE job for each £25k of grant investment 			
Further reading			
<p>ESIF Strategy, www.cumbrialep.co.uk</p>			

Derby, Derbyshire, Nottingham, Nottinghamshire

LEP area	Derby Derbyshire Nottingham Nottinghamshire	Call reference number	08RD17BS0003
LEP area Growth hub website	http://www.d2n2growthhub.co.uk/		
LEP area rural map	https://www.gov.uk/government/uploads/system/uploads/attachment_data/file/270529/Derby_Derbyshire_Nottingham_and_Nottinghamshire_LEP_full_class.jpg		
Initial amount allocated	£1,579,019	Number of projects funded in LEP area	9 to 45
Minimum grant	£35,000	Maximum grant	€200,000, approximately £170,000

Local priorities

The D2N2 area has a significant rural population. Economic activity and skills levels are relatively high in the D2N2 rural area. The agricultural sector plays an important role in food production, as well as maintaining an attractive environment and contributing to the visitor economy.

This call invites applications for investments that create jobs and grow micro and small businesses in rural areas, including farm diversification into non-farming activities.

Priority will be given to projects that:

- create new and expand existing micro and small businesses in rural areas in the following priority sectors:
 - transport Equipment Manufacturing;
 - life Sciences;
 - food and Drink Manufacturing;
 - construction;
 - transport and Logistics;
 - visitor Economy;
 - creative Industries;
 - low Carbon Goods and Services.
- create new jobs within the applicant business.
- create new higher skilled jobs above the current average skill level of jobs in the applicant business.
- introduce new technologies and/or new processes which will boost productivity in the applicant business.

Further reading

D2N2 LEP's ESIF Strategy, May 2016:

<http://www.d2n2lep.org/write/Documents/ESIF/D2N2-ESIF-Strategy-June-2016.pdf>

Sector Plans for each of the 8 Priority Sectors: <http://www.d2n2lep.org/Key-Sectors>

Applications must consider the relevant Core Delivery Principles:

<http://www.d2n2lep.org/EUFunding/D2N2-ESIF-Core-Delivery-Principles>

Dorset

LEP area	Dorset	Call reference number	09RD17BS0003
LEP area Growth hub website	http://www.dorsetgrowthhub.co.uk/		
LEP area rural map	https://www.gov.uk/government/uploads/system/uploads/attachment_data/file/270532/Dorset_LEP_full_class.jpg		
Initial amount allocated	£664,893	Number of projects funded in LEP area	4 to 19
Minimum grant	£35,000	Maximum grant	€200,000 – approximately £170,000
Local priorities			
<p>The Dorset ESIF strategy identifies the need for businesses located in rural areas to become more productive and competitive.</p> <p>Priority will be given to projects that:</p> <ul style="list-style-type: none"> • increase productivity through adoption of innovative techniques and technology; • create high value jobs, requiring higher skills • create higher paid jobs than the current average in the applicant business • provide jobs that link with skills development activity underway in the Dorset LEP area • reduce the environmental impact of the business or product as a part of the wider project <p>Applicants can read more about the local context in the plans for the appropriate industrial sector at the links shown below. This may help in making an application.</p>			
Further reading			
<p>ESIF Strategy version 2 (February 2016) is at http://dorsetlep.co.uk/funding/eu-funding.</p> <p>DLEP Rural Enterprise Priorities Paper is at http://dorsetlep.co.uk/rural-enterprise-group.</p>			

Enterprise M3

LEP area	Enterprise M3	Call reference number	10RD17BS0004
LEP area Growth hub website	https://www.enterprisem3growthhub.co.uk/		
LEP area rural map	https://www.gov.uk/government/uploads/system/uploads/attachment_data/file/289976/Enterprise_M3_LEP_full_class.jpg		
Initial amount allocated	£1,856,493	Number of projects funded in LEP area	11 to 37
Minimum grant	£50,000	Maximum grant	€200,000 – approximately £170,000
Local priorities			
<p>The Enterprise M3 LEP rural area has a large number of micro and small businesses in a broad and diverse range of business sectors. This call aims to create new jobs and increasing economic activity in the rural area.</p> <p>Priority will be given to projects that:</p> <ul style="list-style-type: none"> • create new or expand existing micro and small businesses in rural areas in the following sectors or their direct supply chains <ul style="list-style-type: none"> • ICT & digital media particularly • satellite Technologies <ul style="list-style-type: none"> • 5G Mobile Communications Technologies • cyber security • photonics • Computer Games and Entertainment Technologies • pharmaceuticals particularly <ul style="list-style-type: none"> • animal Health • aerospace and defence particularly <ul style="list-style-type: none"> • advanced aerospace • professional and business services • create at least 1 full-time equivalent job for each £13,000 of grant investment 			
Further reading			
<p>ESIF strategy http://www.enterprisem3.org.uk/european-structural-and-investment-fund-strategy/</p> <p>Rural briefing paper https://www.enterprisem3.org.uk/rural-action-group</p>			

Greater Birmingham and Solihull

LEP area	Greater Birmingham and Solihull	Call reference number	12RD17BS0002
LEP area Growth hub website	https://www.gbslepgrowthhub.co.uk/		
LEP area rural map	https://www.gov.uk/government/uploads/system/uploads/attachment_data/file/270542/Greater_Birmingham_and_Solihull_LEP_full_class.jpg		
Initial amount allocated	£450,000	Number of projects funded in LEP area	3 to 12
Minimum grant	£35,000	Maximum grant	€200,000, approximately £170,000
Local priorities			
<p>Priority will be given to projects that:</p> <ul style="list-style-type: none"> • help farming businesses diversify into non-agricultural activities • create new or expand micro and small businesses in rural areas in the following priority sectors: <ul style="list-style-type: none"> • advanced manufacturing • food processing • tourism • engineering • create new jobs <p>Applicants can read more about the local context in the ESIF Strategy at the links shown below. This may help in making an application.</p>			
Further reading			
<p>ESIF Strategy, version 1 February 2014 is at http://centrefenterprise.com/european-funding-strategy-consultation/</p>			

Greater Cambridge, Greater Peterborough

LEP area	Greater Cambridge Greater Peterborough	Call reference number	13RD17BS0002
LEP area Growth hub website	http://signpost2grow.co.uk/		
LEP area rural map	https://www.gov.uk/government/uploads/system/uploads/attachment_data/file/270544/Greater_Cambridge_Greater_Peterborough_LEP_full_class.jpg		
Initial amount allocated	£3,248,863	Number of projects funded in LEP area	19 to 64
Minimum grant	£50,000	Maximum grant	€200,000, approximately £170,000
Local priorities			
<p>The GCGP area has over 31,000 SMEs based in rural areas and a rural population of over half a million. Creation of jobs in rural areas is important to the future economic growth of the LEP area. GCGP is seeking to help rural micro and small businesses grow and expand to create new jobs and increase productivity.</p> <p>Priority will be given to projects that show one or more of the following:</p> <ul style="list-style-type: none"> • create new or expand existing micro and small businesses in rural areas improving productivity in the following growth sectors <ul style="list-style-type: none"> • food & drink, • agri-technology, • clean-technology, • bio-technology, • ICT, digital and creative industries • enable diversification of farming businesses into non-agricultural activities, including <ul style="list-style-type: none"> • creation of rural workspace and workshops • creation of on-farm retail • creation of tourism-related accommodation and facilities • create new higher skilled jobs above the current average skill level of jobs in the applicant business • create at least 1 full-time equivalent job for each £25,000 of grant investment 			
Further reading			
<p>GCGP ESIF Strategy, February 2016 version - http://www.gcgp.co.uk/wp-content/uploads/2016/10/GCGP_European-Structural-and-Investment-Funds-Strategy_February-2016-Update-V2-FINAL.pdf</p> <p>GCGP Strategic Economic Plan - http://www.gcgp.co.uk/wp-content/uploads/2013/10/GCGP-Strategic-Economic-Plan_WEB.pdf</p>			

Greater Lincolnshire

LEP area	Greater Lincolnshire	Call reference number	14RD17BS0003
LEP area Growth hub website	http://www.businesslincolnshire.com/		
LEP area rural map	https://www.gov.uk/government/uploads/system/uploads/attachment_data/file/270547/Greater_Lincolnshire_LEP_full_class.jpg		
Initial amount allocated	£1,353,383	Number of projects funded in LEP area	8 to 33
Minimum grant	£40,000	Maximum grant	€200,000, approximately £170,000
Local priorities			
<p>Priority will be given to projects that:</p> <ul style="list-style-type: none"> • enable farming businesses to diversify into non-agricultural activities • create new or expand existing micro and small businesses in rural areas in Greater Lincolnshire LEP priority sectors <ul style="list-style-type: none"> • advanced manufacturing • food processing • tourism • introduce and implement innovation and new technologies to the applicant business • create higher skills jobs above the current average skill level of jobs in the applicant business <p>Applicants can read more about the local context in the sector plans at the links shown below. This may help when making an application.</p>			
Further reading			
<p>ESIF Strategy April 2016 Refresh V2 http://www.greaterlincolnshirelep.co.uk/assets/documents/EU_SIF_%28Structural_Investment_Fund%29.pdf</p> <p>The Greater Lincolnshire Manufacturing Plan sets out the priorities for investment and how we will deliver them: http://www.greaterlincolnshirelep.co.uk/assets/documents/Manufacturing_Plan_Final.pdf</p> <p>The GLLEP has commissioned a specialist Agri Food Sector Report to help identify priority schemes including capital investment for medium agri-food businesses Spring 2014 V1 http://www.greaterlincolnshirelep.co.uk/assets/documents/Agri-food_sector_plan_final.pdf</p> <p>Greater Lincolnshire's Destination Management Plan shows the set of priorities which need to be addressed: http://www.greaterlincolnshirelep.co.uk/assets/documents/Destination_Management_Plan.pdf</p>			

Heart of the South West

LEP area	Heart of the South West	Call reference number	16RD17BS0002
LEP area Growth hub website	http://www.heartofswgrowthhub.co.uk/		
LEP area rural map	https://www.gov.uk/government/uploads/system/uploads/attachment_data/file/270551/Heart_of_the_South_West_LEP_full_class.jpg		
Initial amount allocated	£2,784,740	Number of projects funded in LEP area	17 to 79
Minimum grant	£35,000	Maximum grant	€200,000, approximately £170,000
Local priorities			
<p>Rural areas make up over 90% of The Heart of the South West LEP area. The ESIF Strategy shows that it is difficult for micro and small businesses to access finance to grow their businesses. An important action is to provide grant funding to help create new and expand existing micro and small businesses in rural areas.</p> <p>This call provides capital investment to create new jobs, grow the economy and improve productivity in The Heart of the South West rural area. Applicants can be:</p> <ul style="list-style-type: none"> • Farm businesses wanting to diversifying into non-agricultural activities; and • New or existing micro and small businesses, including social enterprises' in rural areas from all other sectors of the economy. <p>Priority will be given to projects that show two or more of the following:</p> <ul style="list-style-type: none"> • Increase business productivity; • Create higher skilled (Level 4 or above) and/or higher paid (above £24,700) full time equivalent (FTE) jobs; • Create new resilient and ambitious businesses with evidenced future growth potential • Bring to the market new or improved products services; • Implement new processes, techniques or technologies to the applicant business • Allow entry to new markets, including export markets; <p>Support may be available to projects creating buildings for rent or lease. But only where there is clear evidence of need and demand. This includes projects such as offices, workshops, and factories.</p> <p>The HotSW Growth Hub supports businesses to help them grow. Contact the HotSW Growth Hub to find out more.</p>			
Further reading			
<p>Heart of the South West European Structural and Investment Funds (ESIF) Strategy – Version 2, April 2016 is at http://heartofswlep.co.uk/wp-content/uploads/2016/09/May-2016-HotSW-ESIF-Strategy_0.pdf</p> <p>Heart of the South West Devolution for the Heart of the South West: A Prospectus for Productivity is at http://heartofswlep.co.uk/wp-content/uploads/2016/09/Heart-of-the-South-West-Devolution-Prospectus.pdf</p> <p>Dartmoor and Exmoor Economic Prospectus is at http://www.exmoor-nationalpark.gov.uk/_data/assets/pdf_file/0005/618944/Dartmoor-Exmoor-Economy-Prospectus-Full-background-version.pdf</p>			

Hertfordshire

LEP area	Hertfordshire	Call reference number	17RD17BS0002
LEP area Growth hub website	http://www.hertsgrowthhub.com/		
LEP area rural map	https://www.gov.uk/government/uploads/system/uploads/attachment_data/file/270554/Hertfordshire_LEP_full_class.jpg		
Initial amount allocated	£1,216,700	Number of projects funded in LEP area	8 to 34
Minimum grant	£35,000	Maximum grant	€200,000, approximately £170,000
Local priorities			
<p>The economy of rural Hertfordshire is reliant on micro and small businesses. The aim of this call is to support the creation of new and expansion of existing micro and small businesses and create more jobs.</p> <p>Priority will be given to projects that show one or more of the following:</p> <ul style="list-style-type: none"> • introduce and implement new or improved processes and techniques, leading to an increase in productivity and job creation • create new higher skilled above the current average skill level of jobs in the applicant business • create at least 1 full-time equivalent job for each £23,500 of grant investment • enable farming businesses to diversify into non-agricultural activities, including <ul style="list-style-type: none"> • rural workspace and workshops • creation of on-farm retail • tourism-related accommodation and facilities provision 			
Further reading			
<p>ESIF Strategy, version 2 June 2016 is at http://www.hertfordshirelep.com/Our-EU-Strategy.aspx</p> <p>Rural Hertfordshire Profile - http://mediafiles.thedms.co.uk/Publication/BH-Herts/cms/pdf/20150423%20Rural%20Hertfordshire%20Profile.pdf</p>			

Humber

LEP area	Humber	Call reference number	18RD17BS0001
LEP area Growth hub website	http://hub.humberlep.org/		
LEP area rural map	https://www.gov.uk/government/uploads/system/uploads/attachment_data/file/270555/Humber_LEP_full_class.jpg		
Initial amount allocated	£200,000	Number of projects funded in LEP area	2 to 5
Minimum grant	£35,000	Maximum grant	€200,000, approximately £170,000
Local priorities			
<p>Priority will be given to projects that:</p> <ul style="list-style-type: none"> • create new micro and small businesses in rural areas in the tourism sector, in particular projects that <ul style="list-style-type: none"> • create quality serviced accommodation where there is clear evidence of need and aim to achieve formal accreditation through industry bodies • help farm businesses diversify into non-agricultural activities • create 1 new full time equivalent job for each £20,000 of grant investment 			
Further reading			
<p>Humber ESIF Strategy, Version 1, May 2014 is at http://www.humberlep.org/strategies-and-deals/european-structural-and-investment-funds-strategy/</p> <p>Humber Strategic Economic Plan is at http://www.humberlep.org/strategies-and-deals/the-humber-strategic-economic-plan/</p> <p>Visit Hull & East Yorkshire Visitor & Tourism Strategy - http://www.visithullandeastyorkshire.com/business/about-us.aspx</p> <p>East Riding Tourism Accommodation Study – due for formal adoption December 2016. Available upon request from Owen Robinson at owen.robinson@eastriding.gov.uk or 01482 391739.</p> <p>Visit North Lincolnshire - http://www.visitnorthlincolnshire.com/</p> <p>Discover North East Lincolnshire - http://www.discovernel.co.uk</p>			

Liverpool City Region

LEP area	Liverpool City Region	Call reference number	22RD17BS0001
LEP area Growth hub website	https://localgrowthhub.com/		
LEP area rural map	https://www.gov.uk/government/uploads/system/uploads/attachment_data/file/270686/Liverpool_City_Region_LEP_full_class.jpg		
Initial amount allocated	£340,000	Number of projects funded in LEP area	2 to 9
Minimum grant	£40,000	Maximum grant	€200,000, approximately £170,000
Local priorities			
<p>Priority will be given to projects that:</p> <ul style="list-style-type: none"> • create jobs and grow both new and existing micro and small businesses in rural areas in the following sectors <ul style="list-style-type: none"> • Advanced Manufacturing; • Life and Health sciences; • Digital and Creative; • Low Carbon and Energy; • Logistics; • Marine and Maritime • create jobs and grow both new and existing micro and small businesses in rural areas in ancillary professional, technical and scientific activities that support the sectors shown above • will be finished and fully operational by 31 December 2018. • create and deliver products and services that are new to either the business and/or to the market. • create high skilled permanent jobs. • provide benefits to the wider rural economy. • demonstrate fit with the ESIF Rural Approach, the LCR ESIF Strategy and the Single Growth Strategy (see below). 			
Further reading			
<p>ESIF Rural Approach</p> <p>https://www.liverpoollep.org/eu-funding/</p> <p>https://www.liverpoollep.org/wp-content/uploads/2016/06/SGS-SUMMARY-final-low-res.pdf</p>			

New Anglia

LEP area	New Anglia	Call reference number	24RD17BS0003
LEP area Growth hub website	http://www.newangliagrowthhub.co.uk/		
LEP area rural map	https://www.gov.uk/government/uploads/system/uploads/attachment_data/file/270690/New_Anglia_LEP_full_class.jpg		
Initial amount allocated	£3,063,214	Number of projects funded in LEP area	18 to 61
Minimum grant	£50,000	Maximum grant	€200,000, approximately £170,000
Local priorities			
<p>The New Anglia Strategic Economic Plan aims to create 95,000 more jobs and 10,000 new businesses by 2026. Most of Norfolk and Suffolk is rural with nearly half of the population living in rural areas including the network of market towns. Over half the businesses are located in rural areas and these market towns. Creating new and expanding existing micro and small businesses in rural areas is vital to ensure these ambitious targets are achieved.</p> <p>Priority will be given to projects that show one or more of the following:</p> <ul style="list-style-type: none"> • introduce new or improved processes and techniques (including lower carbon), leading to increase in productivity and job creation • create new higher skilled jobs above the current average skill level of jobs in the applicant business • create at least 1 full-time equivalent job for each £25,000 of grant investment • enable farming businesses to diversify into non-agricultural activities, including <ul style="list-style-type: none"> • rural workspace and workshops • creation of on-farm retail • tourism-related accommodation and facilities provision 			
Further reading			
<p>ESIF Strategy - http://www.newanglia.co.uk/wp-content/uploads/2013/11/2015-11-27-New-Anglia-LEP-EU-Investment-Strategy-version-Nov-2015-FOR-GOV.pdf</p> <p>New Anglia Strategic Economic Plan (SEP) - http://www.newanglia.co.uk/wp-content/uploads/2014/03/New-Anglia-Strategic-Economic-Plan-V2.pdf</p> <p>New Anglia Green Economy Manifesto (2012-2015) - http://www.newanglia.co.uk/wp-content/uploads/2013/11/Green-Economy-Manifesto.pdf</p> <p>Norfolk Rural Development Strategy https://www.norfolk.gov.uk/what-we-do-and-how-we-work/policy-performance-and-partnerships/policies-and-strategies/business-policies/rural-development-strategy</p> <p>Suffolk Growth Strategy https://www.suffolk.gov.uk/assets/suffolk.gov.uk/Business/Business Services/Economic development/2013-05-08 updated growth strategy.pdf</p>			

North East

LEP area	North East	Call reference number	25RD17BS0001
LEP area Growth hub website	http://www.northeastgrowthhub.co.uk/		
LEP area rural map	https://www.gov.uk/government/uploads/system/uploads/attachment_data/file/270692/North_Eastern_LEP_full_class.jpg		
Initial amount allocated	£1,392,370	Number of projects funded in LEP area	8 to 39
Minimum grant	£35,000	Maximum grant	€200,000, approximately £170,000
Local priorities			
<p>Priority will be given to projects that are located in the eligible areas of County Durham, Northumberland and Gateshead or within the North East Rural Growth Network boundary (see RGN Map at this link) and that:</p> <ul style="list-style-type: none"> • create new or expand existing micro and small businesses in rural areas leading to growth of the applicant business in the following priority sectors: <ul style="list-style-type: none"> • Manufacturing and engineering • Pharmaceuticals • Food and drink • Knowledge Intensive Business Services • Creative • create skilled jobs in the applicant business. • increase productivity in the applicant business. • allow farming businesses to diversify into non-agricultural activities. 			
Further reading			
<p>ESIF Strategy, North East Local Enterprise Partnership 2014 http://nelep.wpengine.com/wp-content/uploads/2014/10/NE-LEP-ESIF-Strategy-Full-23-June-2016.pdf</p> <p>North East Strategic Economic Plan Refresh 2016 http://www.nelep.co.uk/whatwedo/refreshing-the-strategic-economic-plan/</p> <p>North East Rural Growth Network Background Report 2012 https://www.archnorthumberland.co.uk/arch-business/rural-growth-network</p> <p>Final Evaluation of the Rural Growth Network Pilot Initiative 2016 https://www.archnorthumberland.co.uk/uploads/files/defra-rgn-final-evaluation-final-report-19-may-2016.pdf</p>			

Oxfordshire

LEP area	Oxfordshire	Call reference number	27RD17BS0001
LEP area Growth hub website	http://www.oxfordshirebusinesssupport.co.uk/		
LEP area rural map	https://www.gov.uk/government/uploads/system/uploads/attachment_data/file/270698/Oxfordshire_LEP_full_class.jpg		
Initial amount allocated	£747,666	Number of projects funded in LEP area	5 to 21
Minimum grant	£35,000	Maximum grant	€200,000, approximately £170,000
Local priorities			
<p>Priority will be given to projects that:</p> <ul style="list-style-type: none"> • create new and expand existing micro and small businesses in rural areas including those from the following priority sectors <ul style="list-style-type: none"> • automotive and motorsport • creative & digital • electronic • sensors & instruments • life sciences • space technologies • environmental and land-based • social care • logistics • create new services and / or manufacture new products including <ul style="list-style-type: none"> • niche products • those adopting new techniques and processes • increase the productivity of the business • start or increase exporting of products by the applicant business • have reduced environmental impact in line with the Oxfordshire Strategic Environmental Economic Investment Plan • benefit wider rural areas, particularly projects based in rural towns in Oxfordshire 			
Further reading			
<p> ESIF Strategy, April 2016 Oxfordshire Skills Strategy 2016 (link to be inserted) Strategic Economic Plan Strategic Environmental Economic Investment Plan Creative, Cultural, Heritage and Tourism Investment Plan Innovation Strategy Sector profiles for key sectors </p>			

Sheffield City Region

LEP area	Sheffield City Region	Call reference number	28RD17BS0002
LEP area Growth hub website	https://www.scrgrowthhub.co.uk/		
LEP area rural map	https://www.gov.uk/government/uploads/system/uploads/attachment_data/file/270701/Sheffield_City_Region_LEP_full_class.jpg		
Initial amount allocated	£464,123	Number of projects funded in LEP area	3 to 13
Minimum grant	£35,000	Maximum grant	€200,000, approximately £170,000
Local priorities			
<p>Priority will be given to projects that:</p> <ul style="list-style-type: none"> • allow farming businesses to diversify into non-agricultural activities • create new services and / or manufacture new products • increase the productivity of the applicant business • start or increase exporting of products by the applicant business • create 1 full time equivalent job for each £25,000 of grant investment. 			
Further reading			
<p>ESIF Strategy, version 2 June 2016 http://sheffieldcityregion.org.uk/euinvestment/</p>			

LEP area	Solent	Call reference number	29RD17BS0002
LEP area Growth hub website	http://www.solentgrowthhub.co.uk/		
LEP area rural map	https://www.gov.uk/government/uploads/system/uploads/attachment_data/file/289975/Solent_LEP_full_class.jpg		
Initial amount allocated	£555,957	Number of projects funded in LEP area	4 to 55
Minimum grant	£35,000 on the mainland, £10,000 on Isle of Wight	Maximum grant	£150,000
Local priorities			
<p>Priority will be given to projects that:</p> <ul style="list-style-type: none"> • enable farm businesses to diversify into non-agricultural activities • create higher skilled jobs (level 3 & above) • increase the productivity of the applicant business by: <ul style="list-style-type: none"> • adopting new techniques and processes • creating and selling new products and services • allow the applicant business begin or increase exporting of products • contribute to reducing the environmental impact of the applicant business as part of a larger project • have a beneficial economic impact on other businesses in the area 			
Further reading			
<p>ESIF Strategy is at http://solentlep.org.uk/uploads/documents/Solent_EU_SIF_Strategy_-_Version_3_January_2016_FINAL_ver2.pdf</p> <p>The Local Development Strategy for the Isle of Wight can be found: http://naturalenterprise.co.uk/uploads/content_documents/956/IW_LDS_-_Strategy_Priorities_for_Applicants.pdf</p> <p>The Local Development Strategy for the Leader Fieldfare group can be found: http://www.fieldfareleader.org.uk/http-www-fieldfareleader-org-uk-transition/</p>			

South East

LEP area	South East	Call reference number	30RD17BS0002
LEP area Growth hub website	http://www.southeastbusiness.org.uk/		
LEP area rural map	https://www.gov.uk/government/uploads/system/uploads/attachment_data/file/270704/South_East_LEP_full_class.jpg		
Initial amount allocated	£1,856,493	Number of projects funded in LEP area	11 to 37
Minimum grant	£50,000	Maximum grant	€200,000, approximately £170,000
Local priorities			
<p>Priority will be given to projects that:</p> <ul style="list-style-type: none"> • create new and expand existing micro and small businesses in rural areas including those from the following sectors: <ul style="list-style-type: none"> • manufacturing • engineering • Information and Communication Technology and multi-media • create services or manufacture new products including niche products • enable farming businesses to diversify into non-agricultural activities, including rural workspace, workshops and on-farm retail • reduce the environmental impact of the applicant business, as part of a larger project 			
Further reading			
<p>ESIF Strategy, January 2014 is at http://www.southeastlep.com/images/uploads/resources/se-lep-sif-january-submission.pdf</p> <p>SELEP Rural Strategy is at http://www.southeastlep.com/images/uploads/resources/South_East_Local_Enterprise_Partnership_Rural_Strategy.pdf</p>			

South East Midlands

LEP area	South East Midlands	Call reference number	31RD17BS0003
LEP area Growth hub website	http://www.velocitybusinesssupport.com/		
LEP area rural map	https://www.gov.uk/government/uploads/system/uploads/attachment_data/file/270706/South_East_Midlands_LEP_full_class.jpg		
Initial amount allocated	£1,997,627	Number of projects funded in LEP area	12 to 26
Minimum grant	£75,000	Maximum grant	€200,000, approximately £170,000
Local priorities			
<p>The rural economy plays an important role in the SEMLEP area. A quarter of people live in and a third of VAT registered businesses are based in rural areas. The aim of the call is to help create new and expand existing micro and small businesses in the rural area leading to new jobs and increased productivity. Priority will be given to projects that show one or more of the following:</p> <ul style="list-style-type: none"> • enable farming businesses to diversify into non-agricultural activities • create new services or manufacture new products • create 1 full-time equivalent job for every £25,000 or less of grant investment • create apprenticeship jobs, lasting for a minimum of one year • create quality serviced tourist accommodation, where there is clear evidence of need and will achieve formal accreditation through industry bodies • upgrade existing tourism accommodation to increase the current accreditation rating of the accommodation 			
Further reading			
<ul style="list-style-type: none"> • SEMLEP ESIF Strategy http://www.semlep.com/modules/downloads/download.php?file_name=195 • NEP ESIF Strategy http://www.semlep.com/modules/downloads/download.php?file_name=426 • SEMLEP Rural Inclusion Plan http://www.semlep.com/modules/downloads/download.php?file_name=430 • NEP Rural Northamptonshire Plan http://www.semlep.com/modules/downloads/download.php?file_name=429 			

Stoke-on-Trent and Staffordshire

LEP area	Stoke-on-Trent and Staffordshire	Call reference number	32RD17BS0003
LEP area Growth hub website	http://www.stokestaffsgrowthhub.co.uk/		
LEP area rural map	https://www.gov.uk/government/uploads/system/uploads/attachment_data/file/270708/Stoke-on-Trent_and_Staffordshire_LEP_full_class.jpg		
Initial amount allocated	£324,886	Number of projects funded in LEP area	2 to 6
Minimum grant	£50,000	Maximum grant	€200,000, approximately £170,000
Local priorities			
<p>Priority will be given to projects that:</p> <ul style="list-style-type: none"> • allow farming businesses to diversify into non-agricultural activities such as creative industries, manufacturing and food and drink processing • create new and expand existing micro and small businesses in rural areas in the following LEP area priority sectors: <ul style="list-style-type: none"> • Advanced manufacturing • ICT and services • create new higher skilled jobs above the current average skill level of jobs in the applicant business • create new or improved business premises located in rural areas where there is evidence of need and demand. <p>Applicants seeking EAFRD funding should seek support from the Stoke on Trent & Staffordshire Growth Hub http://www.stokestaffsgrowthhub.co.uk/</p> <p>Applicants can read more about the local context in the documents at the links shown below. This may help when making an application.</p>			
Further reading			
<p>SSLEP ESIF Strategy, 2 February 2016: http://www.stokestaffslep.org.uk/wp-content/uploads/2015/04/ESIF-Strategy.pdf</p> <p>SSLEP Strategic Economic Plan, March 2014: http://www.stokestaffslep.org.uk/wp-content/uploads/2014/04/140404-Stoke-and-Staffs-Economic-Plan-Part-1-Strategy-Website.pdf</p>			

Swindon and Wiltshire

LEP area	Swindon and Wiltshire	Call reference number	33RD17BS0001
LEP area Growth hub website	http://www.wiltshirebusinesshub.co.uk/		
LEP area rural map	https://www.gov.uk/government/uploads/system/uploads/attachment_data/file/270711/Swindon_and_Wiltshire_LEP_full_class.jpg		
Initial amount allocated	£900,000	Number of projects funded in LEP area	6 to 25
Minimum grant	£35,000	Maximum grant	€200,000, approximately £170,000
Local priorities			
<p>This call aims to support capital investments into businesses in the Swindon and Wiltshire LEP area that provide products and services that increase sustainable use of the natural capital of the area. 'Natural capital' includes the natural environment, landscape and natural resources.</p> <p>Priority will be given to projects from new or expanding micro and small businesses in rural areas that:</p> <ul style="list-style-type: none"> • are in the following priority sectors <ul style="list-style-type: none"> • Land-based industries, including agri-tech, and the land and environmental management sectors • Digital and ICT, including data mining, mapping, augmented and virtual reality • Health and life sciences, including the environmental and bioscience sectors • bring to the market, innovative products and/or services that <ul style="list-style-type: none"> • improve the efficient use of natural resource • improve the productivity and diversity of land-use and other natural resources • aim to achieve wider benefits, in particular <ul style="list-style-type: none"> • increasing and improving environmental conditions such as water and air quality • improving public health • providing opportunities for access, learning and employability skills related to natural capital 			
Further reading			
<p>The Swindon and Wiltshire ESIF Strategy provides the full information on local priorities for European funding – and particular attention should be made to Activities 2.3 Innovation for Natural Capital – from paragraph 366</p> <p>Projects funded should fall under one of the following categories set out by UK National Ecosystem Assessment – which includes Provisioning services, Regulating services, Supporting services and Cultural services</p> <p>Reference to the national strategy for Agri-Tech https://www.gov.uk/government/publications/uk-agricultural-technologies-strategy and synergy with Agri-Tech catalyst investments https://connect.innovateuk.org/web/biosciencesktn/agri-tech-catalyst is relevant to this call</p>			

Tees Valley

LEP area	Tees Valley	Call reference number	34RD17BS0001
LEP area Growth hub website	http://www.teesbusinesscompass.co.uk/		
LEP area rural map	https://www.gov.uk/government/uploads/system/uploads/attachment_data/file/270714/Tees_Valley_LEP_full_class.jpg		
Initial amount allocated	£450,000	Number of projects funded in LEP area	3 to 12
Minimum grant	£35,000	Maximum grant	€200,000, approximately £170,000
Local priorities			
<p>The aim of this call is create new and expand existing micro and small businesses in rural areas in the Tees Valley LEP area to create new jobs and growth in the rural economy.</p> <p>Priority will be given to projects that:</p> <ul style="list-style-type: none"> • enable farming businesses to diversify into non-agricultural activities • create new or expand existing micro and small businesses in rural areas in the following LEP priority sectors or their wider supply chain, including: <ul style="list-style-type: none"> • Advanced manufacturing; • Chemicals; • Health innovation • Energy • Logistics • Digital and creative • Business and Professional services • Tourism • create new higher skilled jobs above the current average skill level of jobs in the applicant business 			
Further reading			
<p>Tees Valley ESIF Strategy April 2016 https://teesvalley-ca.gov.uk/wp-content/uploads/2016/10/TV-CA-ESIF-Strategy-Doc-Update-DCLG-April-16.pdf</p> <p>Tees Valley Strategic Economic Plan December 2016 https://teesvalley-ca.gov.uk/wp-content/uploads/2016/12/SEP-Document.pdf</p>			

Thames Valley, Berkshire

LEP area	Thames Valley Berkshire	Call reference number	35RD17BS0001
LEP area Growth hub website	http://www.berkshirebusinesshub.co.uk/		
LEP area rural map	https://www.gov.uk/government/uploads/system/uploads/attachment_data/file/270722/Thames_Valley_Berkshire_LEP_full_class.jpg		
Initial amount allocated	£400,000	Number of projects funded in LEP area	3 to 11
Minimum grant	£35,000	Maximum grant	€200,000 (approximately £170,000)
Local priorities			
<p>This call invites applications for capital investments to create jobs and grow rural micro and small businesses in the Thames Valley Berkshire LEP area.</p> <p>Priority will be given to projects that:</p> <ul style="list-style-type: none"> • implement new technologies, processes or equipment to improve productivity • allow farm businesses to diversify into non-agricultural activities • construct and develop workshops, factories and other premises and facilities where there is clear evidence of need and demand 			
Further reading			
<p>ESIF Strategy, version April 2016 is at http://thamesvalleyberkshire.co.uk/LinkClick.aspx?fileticket=IGYsEC1CKng%3d&portalid=0</p>			

West of England

LEP area	West of England	Call reference number	37RD17BS0001
LEP area Growth hub website	https://www.wearegrowth.co.uk/		
LEP area rural map	https://www.gov.uk/government/uploads/system/uploads/attachment_data/file/270728/West_of_England_LEP_full_class.jpg		
Initial amount allocated	£614,308	Number of projects funded in LEP area	6 to 17
Minimum grant	£35,000	Maximum grant	£100,000
Local priorities			
<p>The West of England LEP area ESIF Strategy shows that it is difficult for micro and small businesses to access finance to grow their businesses. Thus an important action is to provide grant funding to help create new and expand existing micro and small businesses in rural areas.</p> <p>Priority will be given to projects that:</p> <ul style="list-style-type: none"> • enable farming businesses to diversify into non-agricultural activities • manufacture new products • Adopt new processes • Allow the applicant business to enter new markets including to start or increase exporting 			
Further reading			
<p>The West of England 2016 refreshed ESIF strategy can be found at http://www.westofenglandlep.co.uk/assets/files/Funding/EU%20SIF%20strategy%20v13%20JAN%202016%20refresh.pdf</p> <p>Applicants may also find it useful to refer to the findings of the West of England LEADER Local Development Strategy document for issues that affect the rural economy http://www.westofenglandrdp.org.uk/wp-content/uploads/2015/12/Final-document-V4-June-15.pdf</p>			

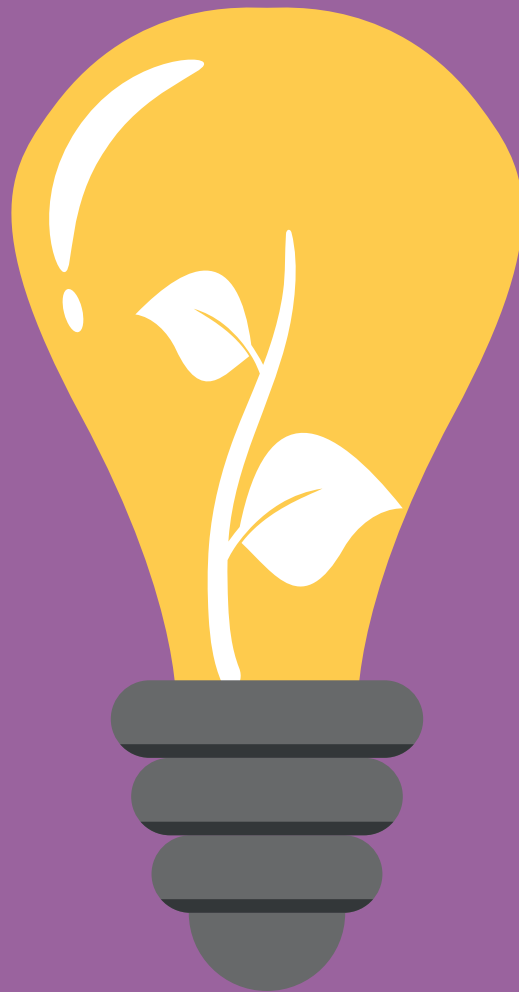
Worcestershire

LEP area	Worcestershire	Call reference number	38RD17BS0004
LEP area Growth hub website	http://www.business-central.co.uk/		
LEP area rural map	https://www.gov.uk/government/uploads/system/uploads/attachment_data/file/270729/Worcestershire_LEP_full_class.jpg		
Initial amount allocated	£1,250,000	Number of projects funded in LEP area	8 to 25
Minimum grant	£50,000	Maximum grant	€200,000, approximately £170,000
Local priorities			
<p>Priority will be given to projects that:</p> <ul style="list-style-type: none"> • allow farming businesses to diversify into non-agricultural activities • create new and expand existing micro and small businesses in rural areas in the following Worcestershire LEP area priority sectors: <ul style="list-style-type: none"> • Advanced Manufacturing • Agri-Food / Technology (including food processing) • Tourism • Cyber Security/Digital technology • create new higher skilled jobs above the current average skill level of jobs in the applicant business <p>Applicants can read more about the local context in the documents at the links shown below. This may help when making an application.</p>			
Further reading			
<p>Worcestershire ESIF Strategy (April 2016 Update) http://www.wlep.co.uk/assets/WLEP-ESI-Funds-Strategy-April-2016-update.pdf</p> <p>Worcestershire Destination Management Plan: http://mediafiles.thedms.co.uk/Publication/HF-VW/cms/pdf/Destination%20Management%20Plan%202012-2015.pdf</p>			



Department
for Environment
Food & Rural Affairs

WE CAN HELP YOUR IDEA GROW



Search for 'RDPE Growth' on www.gov.uk

Defra rural services helpline



03000 200 301



GPEnquiries@rpa.gsi.gov.uk