

South East LEP: *Annual Conversation*

Adam Bryan, Managing Director

1st December 2016

2016 at a glance



- A single Growth Deal list
- Best in class **ITE** re-procured (3+1+1)
- LGF capital programme **on-track**
- **Skills capital** fully utilised
- The **first** Housing Business Ready LEP in the country
- **£49.3m ESF** funding awarded
- **£22.8m ERDF** funding awarded
- Growth Hub supported over **1300 businesses** in first 6 months of the financial year
- **200 schools engaged** with SELEP Careers Enterprise Company network
- **57% increase** on housing starts
- **47% increase** in housing completions
- New Chairman, new Director

Capital Programme Management

Capital Programme Management

- Growth Deal summary
 - ✓ **£488m LGF** investment
 - ✓ Matched with over **£400m local funding**
 - ✓ 75 capital investment projects
- On track to deliver the **23,000 new homes** and **45,000 new jobs** committed to through the Growth Deal.
- By the end of 2016/17 it is forecast that our total LGF spend will amount to:
 - ✓ **£145.384m – excluding retained schemes**
 - ✓ **£151.997m – including retained schemes**
- To date, **58 projects** have been approved by Accountability Board and work is well underway to deliver them. During 2016/17 a further **15** projects are expected to be completed.

Capital Programme Management

South East
Local Enterprise Partnership



Projects due to complete in 2016/17	On Track?
Sovereign Harbour	✓
Swallows Business Park	✓
Colchester LSTF	✓
Colchester Town Centre	£396,000 LGF spend to slip into 2017/18 to support scheme completion in June 2017.
A414 Maldon to Chelmsford RBS	✓
Tonbridge Town Centre Regeneration	✓
M20 Junction 4 Eastern Overbridge	✓
Maidstone Gyratory Bypass	✓
Dover Western Docks Revival	Pending Accountability Board approval
Southend Growth Hub (Phase 1)	✓
TGSE – LSTF Southend	✓
Southend Central Area Action Plan (Phase 1)	✓
Southend and Rochford Joint Area Action Plan	✓
TGSE – LSTF Thurrock	✓
Purfleet Centre	✓

Capital Programme Management

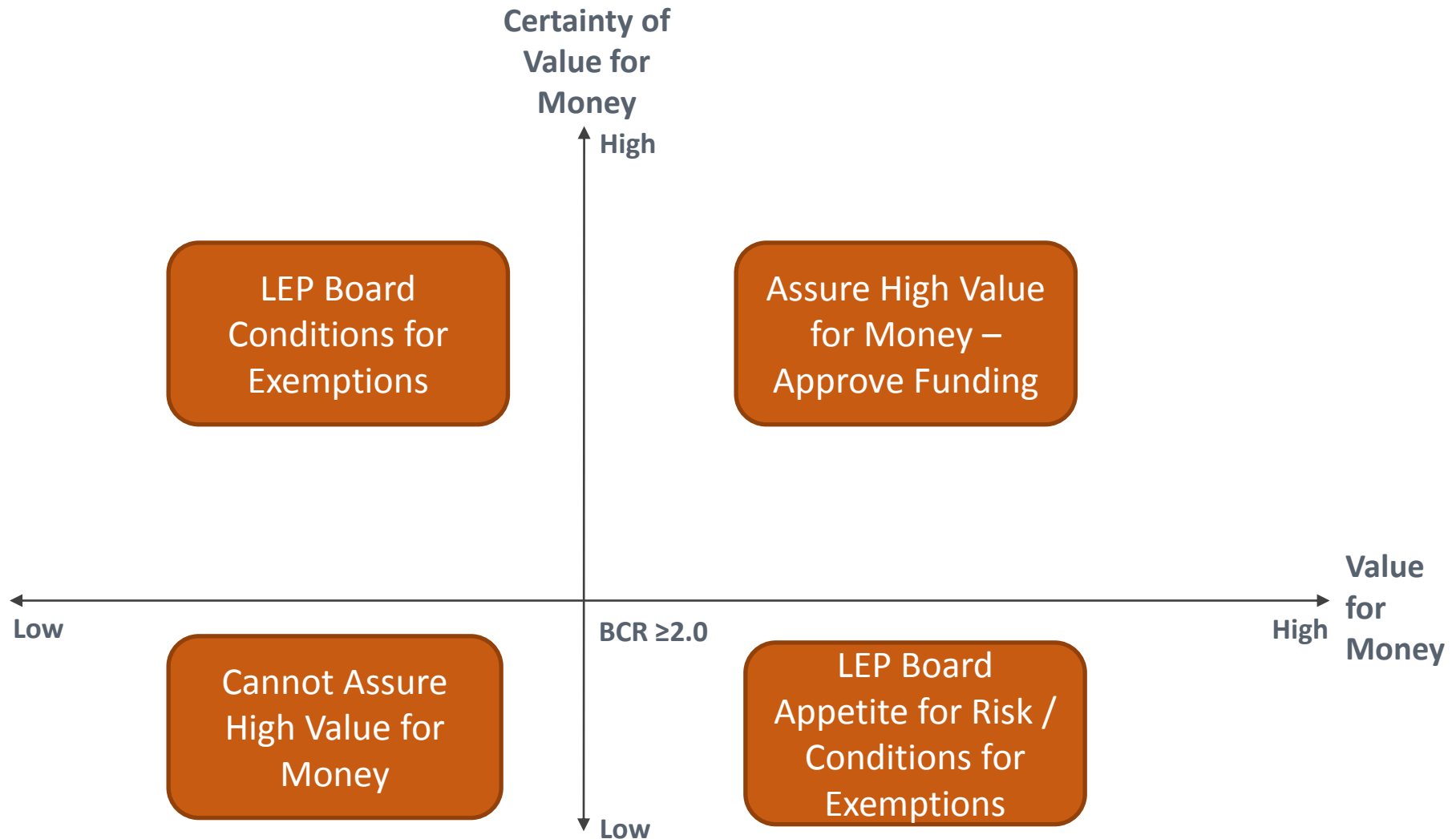
- Delivery approach:
 - ✓ Clear **Assurance Framework** aligned with the National Assurance Framework
 - ✓ Robust **Independent Technical Evaluation (ITE)**
 - ITE assessment of business cases to support all decision to award funding to LGF projects
 - ✓ Strong Capital **Programme Management**, including:
 - Quarterly reporting on all LGF schemes to SELEP Accountability Board and Government
 - Close monitoring of all LGF projects spend, risk, project delivery and benefit realisation

Capital Programme Management: *ITE*

South East
Local Enterprise Partnership



assessment of LGF scheme business cases



GREEN = Local
Growth Fund
allocation of
less than
£5.0m

RED = Local
Growth Fund
allocation of
£5.0m or
more

8th April 2016

South East
Local Enterprise Partnership



Certainty of
Value for
Money

High

£0.0m

£10m

- West Kent LSTF: Tackling Congestion (£4.2m)
- Eastbourne Town Centre Movement & Access Package (£2.5m)
- Thurrock Cycle Network (£1.8m)
- Kent Rights of Way Improvement Plan (£0.8m)
- Kent Strategic Congestion Management Programme (£0.7m)

BCR \geq 2.0

- Kent Sustainable Interventions Programme (£0.5m)

Low

Low

High

Value
for
Money

£0.0m

£0.5m

GREEN = Local
Growth Fund
allocation of
less than
£5.0m

RED = Local
Growth Fund
allocation of
£5.0m or
more

10th June 2016

South East
Local Enterprise Partnership



Certainty of
Value for
Money

High

£14.7m

£0.0m

- Purfleet Centre (£5.0m)
- Rochester Airport (£4.4m)
- A127 Kent Elms Corner Junction (£4.3m)
- Southend Central Area Transport Scheme (S-CATS) (£1.0m)

BCR \geq 2.0

Value
for
Money

High

Low

£0.0m

£0.0m

Low

GREEN = Local
Growth Fund
allocation of
less than
£5.0m

RED = Local
Growth Fund
allocation of
£5.0m or
more

24th June 2016

South East
Local Enterprise Partnership



Certainty of
Value for
Money

High

£0.0m

£0.0m

Low

BCR \geq 2.0

High

Value
for
Money

- Sturry Link Road (£5.9m)

£0.0m

£5.9m

Low

GREEN = Local
Growth Fund
allocation of
less than
£5.0m

RED = Local
Growth Fund
allocation of
£5.0m or
more

16th September 2016

South East
Local Enterprise Partnership



Certainty of
Value for
Money

High

£1.0m

£0.0m

- A127 Bridge & Highway Maintenance (£1.0m)

BCR \geq 2.0

- Ashford International Rail Connectivity (£5.6m)

Value
for
Money

High

Low

£5.6m

£0.0m

Low

GREEN = Local
Growth Fund
allocation of
less than
£5.0m

RED = Local
Growth Fund
allocation of
£5.0m or
more

18th November 2016

South East
Local Enterprise Partnership



Certainty of
Value for
Money

High

£3.2m

£0.0m

- Thurrock Cycle Network (£3.2m)

Value
for
Money

High

BCR \geq 2.0

- A226 London Road/B255 St Clements Way (£4.2m)

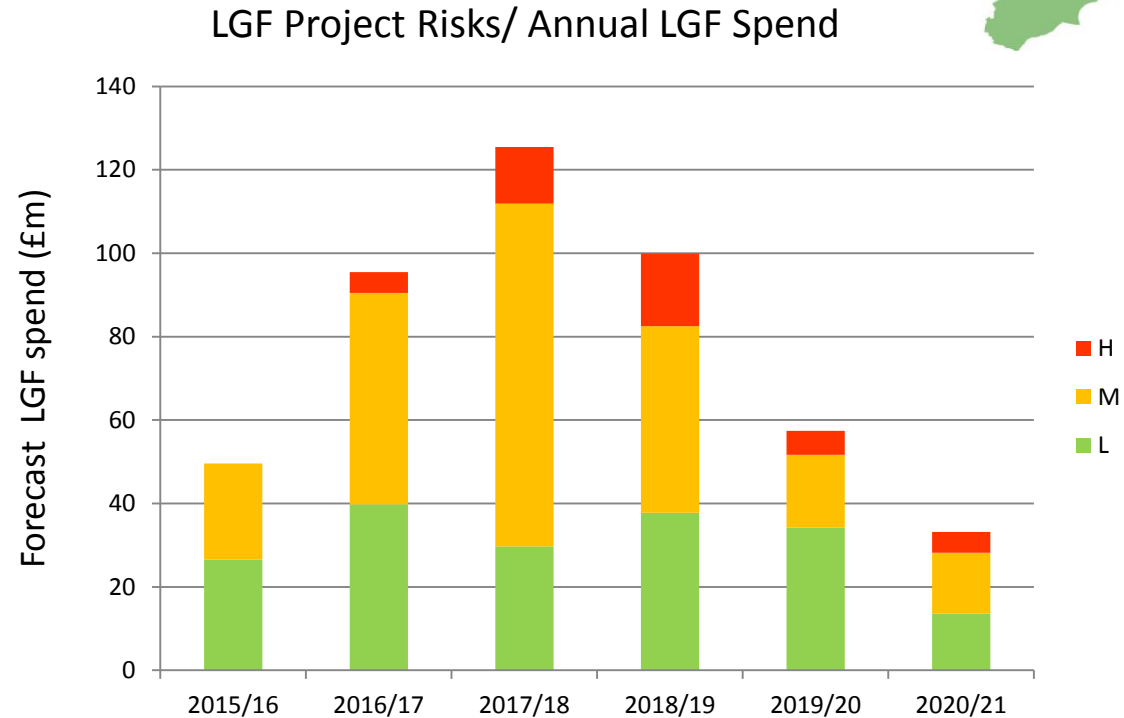
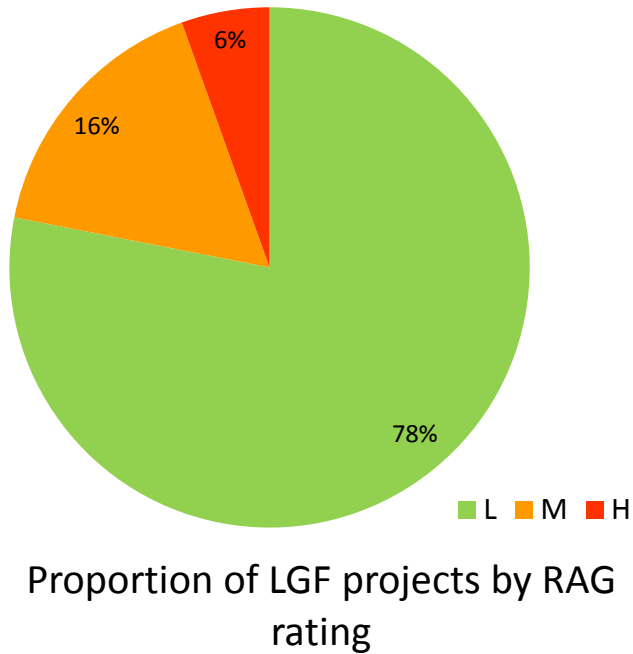
£4.2m

£0.0m

Low

Low

Capital Programme Management



Project Risk	Total number of projects*
L	57
M	12
H	4

Risk of LGF spend slippage	Total number of projects*
L	41
M	28
H	4

* Excludes projects which have been completed

Capital Programme Management

- Total LGF spend forecast in 2016/17:
 - ✓ **£89.67m** excluding retained schemes
 - ✓ **£94.87m** including retained schemes

Table 1 LGF Forecast Spend 2016/17 (£m)

	Total Planned Spend in 2016/17 (as at Q1 2016/17)	Total Planned Spend in 2016/17 (as at October 2016)	Variance *
East Sussex	16.88	16.88	0.00
Essex	9.70	8.31	-1.39
Kent	34.00	29.66	-4.34
Medway	5.77	4.63	-1.13
Southend	5.10	5.10	0.00
Thurrock	12.95	12.53	-0.42
<i>Skills</i>	12.08	12.09	0.01
<i>Housing Regen</i>	2.00	0.46	-1.54
LGF Sub-Total	98.48	89.67	-8.81
Retained	5.20	5.20	0.00
Total Spend Forecast	103.68	94.87	-8.81

**Table 2 Forecast LGF spend relative to LGF allocation in 2016/17
(excludes retained schemes).**

	(£m)
LGF allocation in 2016/17	82.27
Funding swaps to local partner programmes - Option 4 mitigation	12.66
Skills carry-forward from 2015/16	1.08
Total LGF available to spend in 2016/17	96.01
Total LGF forecast spend in 2016/17	89.67
Variance*	-6.34

*Difference between the total LGF available to spend in 2016/17 and the total planned spend in 2016/17.

Capital Programme Management

South East
Local Enterprise Partnership



Option	Mitigation
1	Bringing forward of planned future year LGF spend on schemes in the 2016/17 LGF programme
2	Bringing forward of 2017/18 LGF schemes to spend in 2016/17
3	Transfer of LGF spend on schemes between partner authorities
4	Re-profiling of spend between LGF projects and Capital Programme projects
5	Hold of LGF by SELEP between 2016/17 and 2017/18



Approved Mitigation

- **Approval of accelerated LGF spend in 2016/17 for:**
 - ✓ A226 London Road/B255 St Clements Way (£800,000)
 - ✓ Strood Town Centre (£60,000)
 - ✓ Medway Cycle Action Plan (£384,000)
 - ✓ Basildon Integrated Transport Package (£1,683,000)
- **Approve** spend of £673,000 on Colchester Integrated Transport Package in 2016/17.
- Opportunities to **bring forward** LGF Round 3 projects?

Swallow Business Park, East Sussex



- £1.4m LGF
- £11.2m match funding
- Utilities
- Site enabling works
- Site access road

- The project is due to be fully **completed in December 2016**
- Delivering **330 new jobs** and **10,344m²** of new commercial space



Maidstone Gyratory, Kent

South East
Local Enterprise Partnership



- **£4.6m LGF**
- **£1.14m local funding**
- **Due to be operational by 1st Dec 2016 and fully completed by early 2017.**

Kent Elms Corner, Southend



- £0.5m LGF for Phase 1 - **Completed**
- £3.8m LGF for Phase 2 – due to complete in May 2017
- Addressing capacity issues, accessibility and journey time reliability along the A127 corridor , for access to Southend, Rochford and London Southend Airport

Colchester LSTF, Essex

- £2m LGF investment to improve pedestrian and cycling facilities
- Final measures to be completed in **October 2016**

Colchester Park and Ride and Bus Priority measures, Essex

- £5.8m LGF
- **Project completed** in 2015
- Both projects support the delivery of Colchester North Growth Area Urban Expansion – 2,200 new homes



M20 Junction 4 Overbridge, Kent



- **£2.2m LGF** and **£3.5m private sector match**
- Due to be completed in January 2017
- Supporting the delivery of **1,695 new homes**

European Structural and Investment Funds



European Union

European Structural
and Investment Funds

South East
Local Enterprise Partnership



ESIF

- **£161m allocated to SELEP for a 2014-2020 programme of projects**

ESF

- **£71.6m**
- Access to employment, integration of young people, social inclusion, and investing in skills, education and lifelong learning

ERDF

- **£74.1m**
- Research and innovation, SME growth, low carbon economy

EAFRD

- **£14.5m**
- Rural businesses, rural tourism and food manufacturing



- **European Social Fund**

- ✓ 8 full applications and agreements made - value £49.3m
- ✓ Match funding from Opt-in agencies DWP JC+, SFA and Big Lottery
- ✓ Youth Employment Initiative project (YEI) in Thurrock progressing well
- ✓ 3 x Community Led Local Development (CLLD) in Hastings, Folkestone and Tilbury progressing to full application stage
- ✓ 31% of the allocation remaining with a series of pipeline tender documents under preparation



- ESIF Ambition for ESF

ESF THEMATIC OBJECTIVES	ESF OPT-INS UNDER NEGOTIATION	SELEP ACTIVITIES	SELEP DELIVERY METHODS
<p>TO8. Access to employment</p> <p>TO8. Sustainable integration of young people, particularly NEET, into the labour market</p>	<p>DWP</p> <p>Big Lottery</p>	<p>Active Inclusion: Transitions to Work and reducing youth unemployment</p>	<p>Work experience</p> <p>Preventing inactivity</p> <p>Reducing underemployment</p> <p>Transition support</p> <p>Job-carving and on-going support</p> <p>Soft skills</p> <p>Numeracy, literacy and IT skills</p> <p>Learning in the community</p> <p>Volunteering for employability</p> <p>Mentoring/face-to-face support</p> <p>Employment and skills boards</p> <p>Portal</p> <p>Guilts</p> <p>Employer-led engagement</p> <p>Information, Advice and Guidance</p> <p>Employer-led Skills Brokerage (eg GTA/ATA/SBWA)</p> <p>Financial incentives – stimulating employer demand</p> <p>Bespoke employer-led higher level skills training (including leadership and management)</p> <p>Retraining in growth sectors</p>
<p>TO9. Promoting Social Inclusion & Combating Poverty</p>	<p>SFA</p>	<p>Employer-led Infrastructure & Information, Advice & Guidance</p>	
<p>TO10. Investing in Education, Skills & Lifelong Learning</p>		<p>Increased apprenticeships & other vocational provision (including brokerage)</p> <p>Up-skilling the workforce & SME Growth</p>	



- **ESF: Future**

- ✓ Monitoring of awarded contracts and ensuring local fit
- ✓ Approximately £20m remaining (requiring 50% match)
- ✓ Local priorities and feedback provided through Skills Advisory Group, local authorities and ESBs
- ✓ Aligning to original allocations and ESIF Strategy
- ✓ Working with DWP, future calls for tender by February 2017 planned for:
 - *Apprenticeships from level 2 to level 3*
 - *Supporting people into employment (with a focus on females into employment in growth sectors)*
 - *Supporting young unemployed and NEET young people into employment*
 - *Brokering opportunities to encourage and increase work experience, work placements, traineeships, apprenticeships and graduate placements*



- **European Regional Development Fund**
 - ✓ 8 projects already contracted - £22.8m (31%) supporting 2,260 businesses
 - ✓ 3 projects at full application seeking a contract - £8.9m (12%) to support over 600 businesses
 - ✓ 4 projects in the pipeline, representing £7.2m (10%)
 - ✓ Currently awaiting new Open Calls for applications, for the remaining £35.2m (47%)

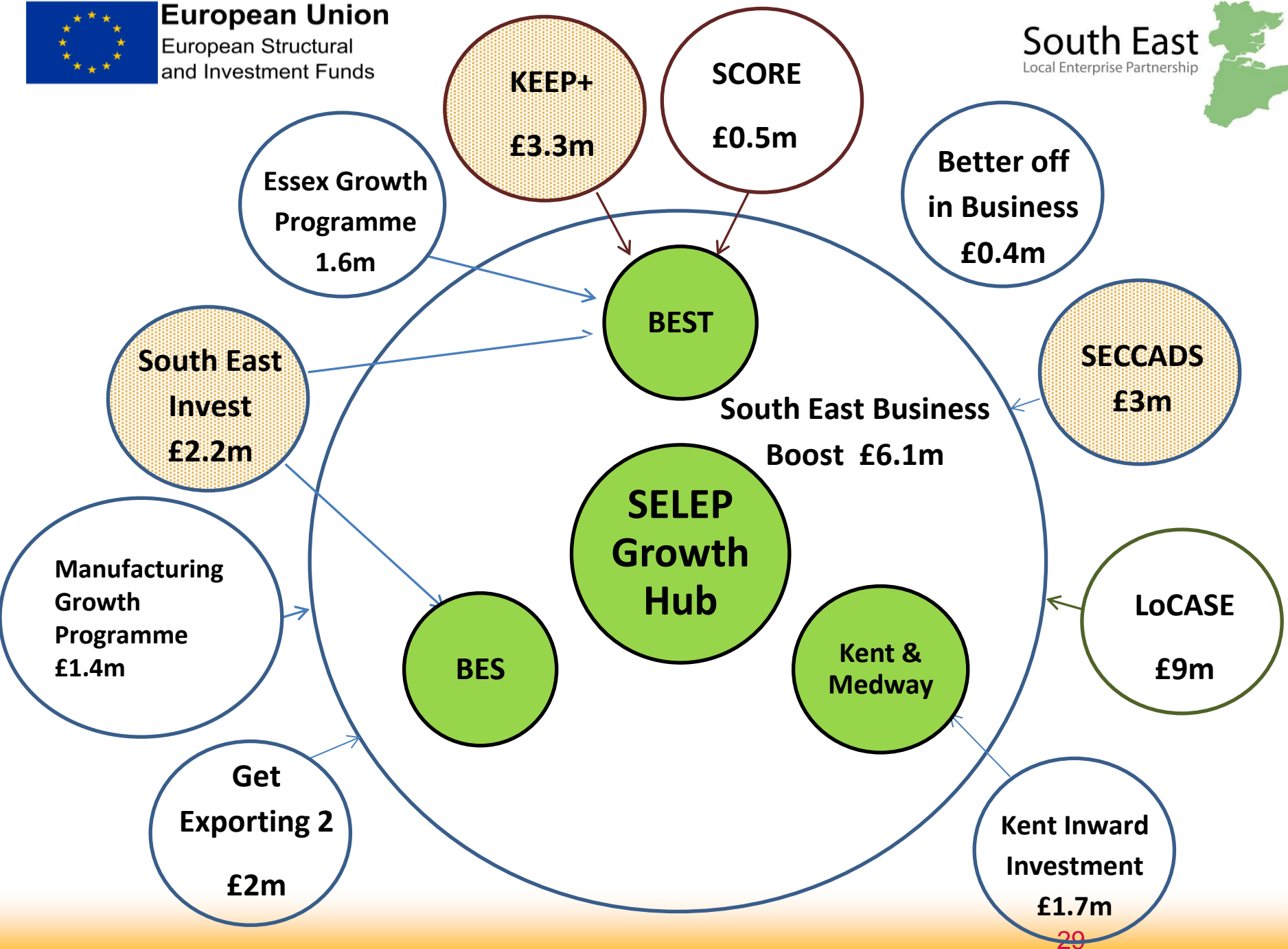


European Union

European Structural
and Investment Funds

South East

Local Enterprise Partnership



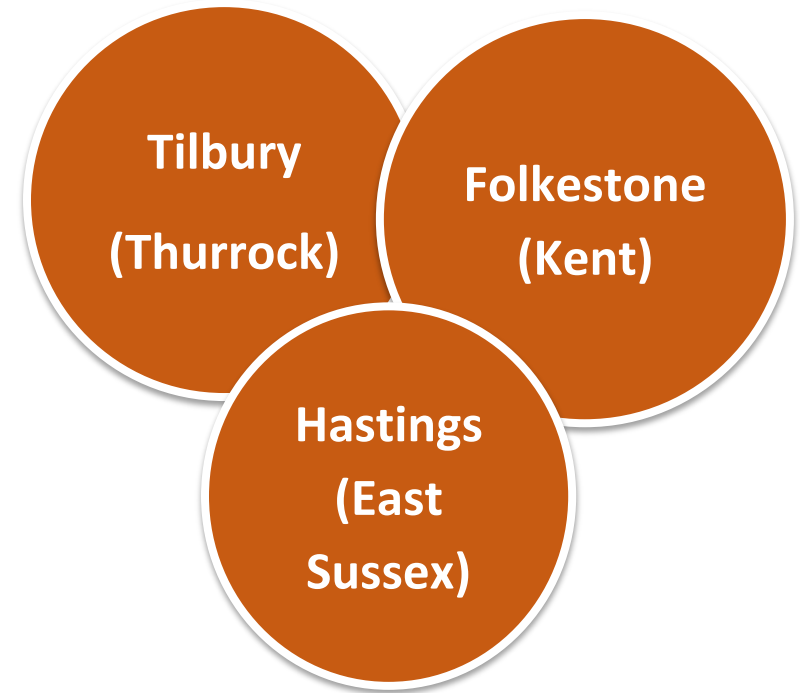


European Union

European Structural
and Investment Funds



- **Community-led local development**
 - ✓ 3 CLLD areas within SELEP
 - ✓ Among the most deprived areas in the country
 - ✓ Combination of ESF and ERDF
 - ✓ Each has a 5-year strategy for interventions delivery 2017-2022





- European Agricultural Fund for Rural Development
 - ✓ 2 projects approved supporting rural business worth **£214,000**
 - ✓ Calls anticipated shortly remaining **£14,253,989** to be made available to applicants for
 - Rural business development
 - Creating sustainable rural visitor attractions
 - Food processing

South East Business Hub (Growth Hub)



- Successful launch of Growth Hub and creative prospectus at House of Commons in March.
 - Growth Hubs embedded into local networks with local referral networks and regular steering groups in each area.
 - Successful re-procurement of delivery contracts in East Sussex and Kent & Medway
-
- Information Sharing Agreements and shared CRM developed - includes support for new ERDF projects.
 - From April to September 2016, South East Business Hub has:
 - ✓ Engaged with and supported 1333 businesses
 - ✓ Referred 588 businesses to external support providers
 - ✓ Of those, 57% of referrals were to local external support providers
 - ✓ Over 75% of businesses stated they were very satisfied with the service.

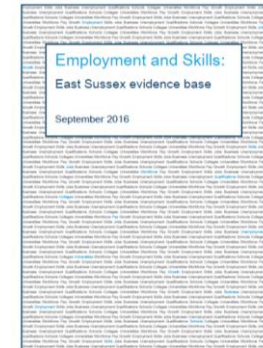
- Small delegation of Creative and Digital Businesses supported to attend the **International Festival for Business** in June, in collaboration with DIT.
- New Growth Hub Evaluation and Monitoring **Intern** recruited, in collaboration with University of Essex.
- End of year **evaluation reports** undertaken across the area reviewing delivery and identifying areas for focus and activity over the coming year.
- Procurement currently underway for redevelopment of **websites** across the area and move towards more self-serve functionality, to provide better service for businesses and free up time of business navigators, a key recommendation from the evaluation reports.
- Procurement currently underway for piece of work looking at **mapping and new operational context** for Growth Hubs, and options for future sustainability.

Skills

Skills: Area Reviews

- Sussex Coast Area Review complete with reports due to be published in the next few weeks. SELEP and local authority role in future engagement via ESB
- Greater Essex first Steering Group held November, with a LEP and Employment and Skills Board (employer) presentation
- Kent & Medway first Steering Group December, with a LEP and Kent Skills Commission / Economic Partnership joint presentation
- Informed by local evidence

South East
Local Enterprise Partnership

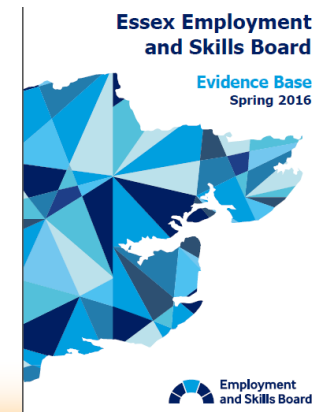


The Kent and Medway
Workforce Skills Evidence Base

Dr Jonathan Pratt and Steve Matthews
Emergent Research and Consulting

September 2015

KMEP Kent
& Medway
Economic
Partnership



- Articulating the importance of skills in economic growth
- Outlining the remaining challenge – significant apprenticeship growth, reducing numbers with no qualifications
- Showcasing good practice and progress across the LEP
- Consultation underway with LEP Skills Lead engaging with networks and partners including Sector Skills Councils and Industry bodies
- Consultation questionnaire on LEP website by January
- Final publication by **April 2017**

Skills: Careers Enterprise Company

- Part of a national network connecting employers with schools and colleges
- Teams across the South East LEP Area
- Nearly 200 schools & colleges across SELEP engaged already
- SELEP coordinating Greater Essex CEC Steering group
- SELEP coordinating LEP wide (and cross LEP) networking day to share best practice and plan for the future



Skills: Skills Advisory Group

- Communicating apprenticeship reforms and levy
- Taking forward the Skills Portal, Data Cube and ESF
- Overseeing the Skills Strategy for publication in April 2017
- Cascading information to provider networks, colleges, local authorities and ESBs
- Advocacy role where necessary

Skills: Skills Capital

- £22m for 2015/16 and 2016/17, all forecast to be spent (over £15m to date)
- 4 funding rounds with LEP panel and independent technical SFA evaluation
- Funding aligned to LEP and federated area growth priorities – 29 projects
- Grant agreements signed to date – 5,000 additional learners supported in areas such as construction, logistics, STEM, digital, health and care
- Showcase event for all projects planned next year

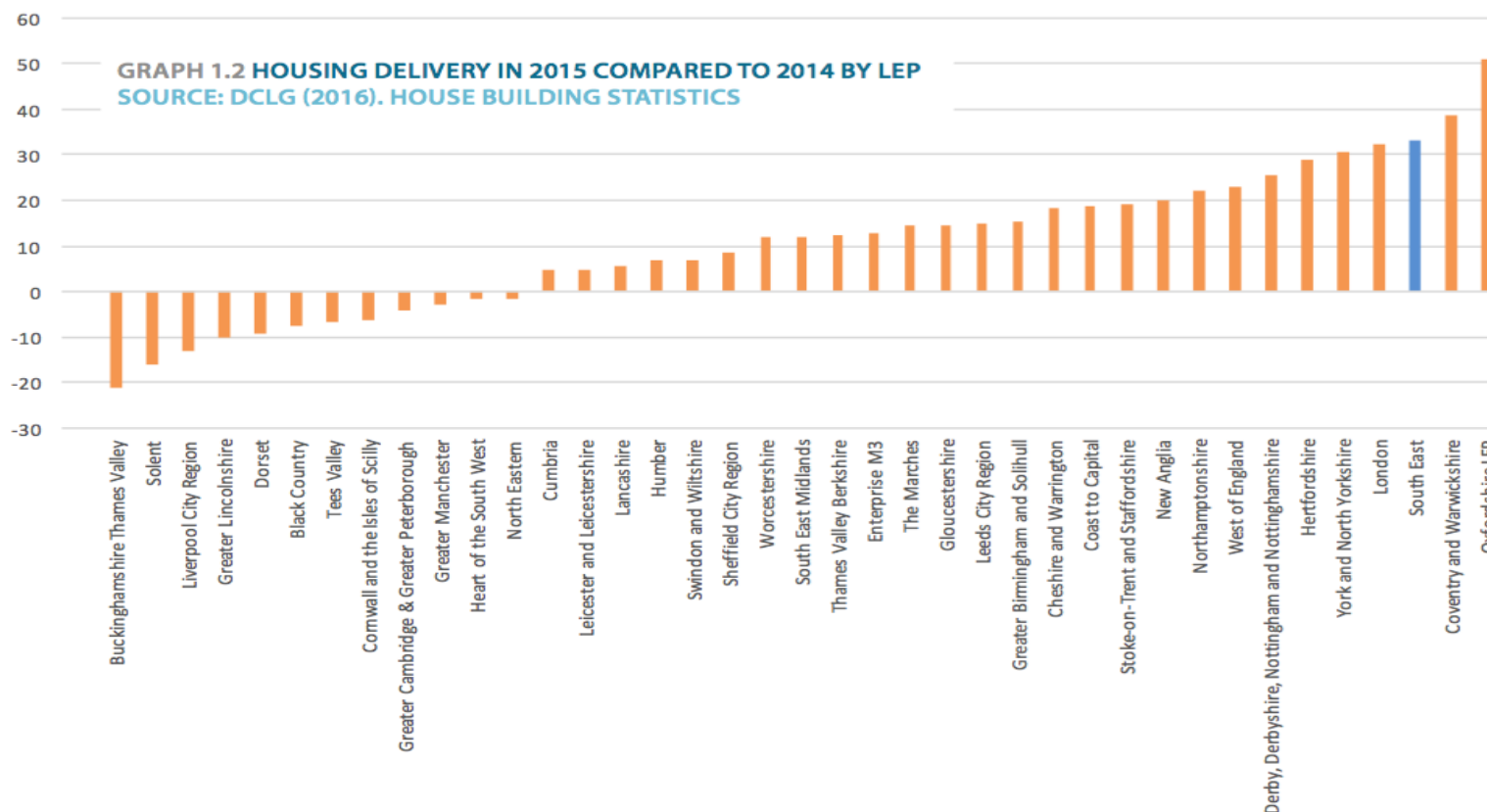


Housing

Accelerating Housing Delivery



- SELEP performed strongly, delivering 10,600 completed dwellings in 2015/16, compared to 7,690 in 2014/15 – an increase of 33%.
- We outperformed 36 other Local Enterprise Partnerships and the English average increase of 13%.





- Accelerating housing delivery is a key ambition in the SEP, with an ambition to accelerate housing delivery by an additional 100,000 homes by 2021, to contribute to the Government ambition for an additional 1 million homes across the nation by 2020.
- The SELEP area has seen **housing starts** rise from 6,620 in 2012/13 to 10,410 in 2015/16, a **57% increase**. Over the same period, London starts grew only 19%.
- Our collective work has made a demonstrable difference, with Housing completions growing from 7,230 in 2013/14 to 10,600 in 2015/16, a **47% increase in completions**.

SELEP	Starts	Completions
2012-13	6,620	7,990
2013-14	8,590	7,230
2014-15	9,930	7,960
2015-16	10,410	10,600

DCLG LIVETABLE TABLE 255
HOUSEBUILDING: PERMANENT DWELLINGS STARTED AND
COMPLETED, BY TENURE AND LEP



- **Bring together interested parties to drive development forward** – we are working with the **Housing and Finance Institute (HFi)**, **Councils**, the **HCA** and **developers** to promote housing growth, assembling evidence, identifying obstacles, funding and promoting solutions
- **Support Growth Ambitions** - SELEP provide support and advocacy to areas with ambitious growth plans across the SELEP area including **Ebbsfleet Garden City**, **North Essex Garden Settlement** and **Otterpool Park**
- **Encourage and support councils to bring forward their local plans** – Through our support for the roll out of **Planning Protocols**, **Duty to Co-operate** workshops and the series of SELEP sponsored **Housing Business Ready** visits with housing and planning authorities we promote the contribution that the local planning process can play in promoting **accelerated housing delivery**
- **Review the performance of utility companies** - Working collaboratively with HFi, Kent Developers Group, Kent County Council, Developers East Sussex, TGSE Developers Forum and other interested parties to gather evidence of performance and taking action in liaison with Government and regulators to ensure utility companies help - not hinder - local growth
- **Promote best practice** - Supporting events and meetings to share best practice and information to support all to the standard of the best, this has helped in widening opportunity for joint working with business through new and existing Developers Forums across the SELEP Area and our regular engagement with Kent Housing Group, East Sussex Housing Officers Group, TGSE Housing Group and Essex Housing Officers Group

Infrastructure Dependencies Pilot

South East
Local Enterprise Partnership



How to build more homes, faster



HFi Housing Business Ready (HBR)

- There is significant pressure in our area to deliver housing, with pressures from London and a growing population. We recognised the need to act and partnering with the HFi was a bold step.
- The delivery of the programme across all three counties of the LEP, helps to support economic growth and competitiveness.
- We want to deliver good quality housing which creates communities within which people want to live and which can attract the skilled and experienced employees our businesses need.
- A lot of hard work has gone into the first six HBR programmes in our area and credit must go to the Councils involved: **Ashford, Braintree, Colchester, Eastbourne, Maidstone and Thurrock.**
- We are extending the programme to a number of our coastal communities, which represent a different housing and economic challenge: **Tendring, Southend, Hastings and Thanet.**



SELEP - 1st Housing Business Ready LEP

South East
Local Enterprise Partnership



- We are proud that SELEP is the **1st LEP nationally** to be awarded the **Housing Business Ready status** by the Hfi.
- We benefit from highly effective and ambitious District, Unitary and County councils in the SELEP area and we work collaboratively with them and the developers to add value to the excellent work already underway to accelerate the delivery of new housing.
- **HFI Chief Executive Natalie Elphicke said:** *“The South-East Local Enterprise Partnership very much deserve to be the first of their kind to be awarded Housing Business Ready status. Their excellent contributions to the Housing Business Ready programme has demonstrated their appetite for working closely with businesses and councils to ensure economic growth and housing stability for their region.”*



Enterprise Zones

- Site currently at **68% occupancy**, 150 companies and circa 2,400 people employed
- Core science, pharma, life-science based maintained and growing resilience from original single major occupant
- **New manufacturing** developments commenced on site circa **70,000sq.ft** and further applications being processed
- **East Kent College and Canterbury Christchurch University** on site providing education and training in a live environment
- £160m Biomass Renewable Plant under construction and due to complete in 2018
- Approved site wide masterplan proposals evolving with infrastructure planning

- **12,000sq.ft of refurbished office space completed and fully let** to two US electronic companies – occupied from August 2016
- Data Centre development received full planning consent, ground works completed for first building November 2016
- Vinci UK Developments appointed as Harlow DC's preferred development partner for creation of 25 acre Science Park
- New access road under construction – completion January 2017
- Design work completed for Science Park infrastructure – delivered 2017
- Outline design completed for first two buildings on Science Park – construction to start 2017

Enterprise Zones – North Kent Enterprise Zone



- **Kent Medical Campus** – contracts let for new site specific website and marketing, extensive market research on occupier market interest
- **Rochester Airport** – sector focus proposed high technology engineering and advanced manufacturing; additional market research required to inform targeted marketing and clarify return on investment from different development options
- **Ebbsfleet Garden City** – sector focus at Northfleet Rise, medical and healthcare research, development and professional training; Northfleet Riverside focus, advanced manufacturing and creative/digital industries. Market research continuing to inform development and investment decisions
- Access road at Kent Medical Campus complete
- Approval of Joint Venture between Ebbsfleet Development Corporation and Gravesham Borough Council to acquire and develop commercial quarter at North Riverside East
- Rochester Airport planning application to be submitted December 2016

Enterprise Zones – Newhaven

- Key growth location with a **clean, green and marine** sector focus
- EZ covers 79 hectares across 8 sites. Will deliver 55,000m² new floorspace; 15,000m² refurbished floorspace and create or sustain 2,000 jobs
- **Newhaven Port Access Road (£23m – ESCC: £13m; LGF: £10m)**
 - Supports delivery of Port Masterplan and unlocking economic development potential of Port. Critical infrastructure for EZ.
 - Phase 1a completed as part of housing development.
 - Phase 1b will extend road over railway and creek to harbour mouth. DfT portfolio scheme - business case for being developed for submission in Spring 2017. Demonstrating very high economic benefits. Construction start Summer 2017.
 - Discussions with major aggregates company regarding site utilising PAR
- **Newhaven Eastside South** - LGF Round 3 bid for £1.6m to fund the development of Phase 1: two blocks of affordable starter business units of 1,191 m² each. Developer will also enter into an agreement to build another phase of units of at least an equal size as Phase 1; will be commercially funded on a speculative basis.
- **Newhaven Movement, Access & Resilience Package** – Put forward as an LGF Round 3 bid. £15.2m joint C2C/SELEP package of local transport, capacity improvement and highway maintenance schemes.

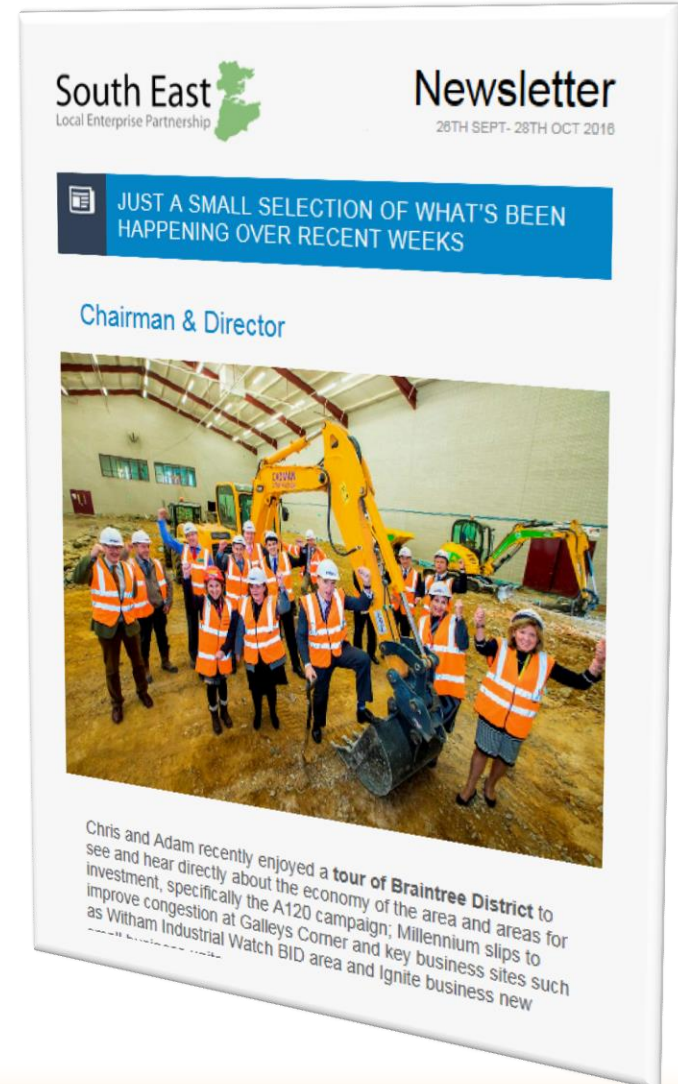
Communications

- Key headlines this year:
 - ✓ Lower Thames Crossing, SELEP-led campaign **across all LEPs** to encourage responses to consultation January – March 2016
 - ✓ Growth Hub and Creative Prospectus parliamentary launch – demonstrating support being offered directly to small businesses and building on the existing strengths of the creative and digital sectors
 - ✓ West Anglia Mainline, **working with neighbouring LEPs** in promotion of prospectus and encouraging business engagement in development of business case to Government
 - ✓ Appointments of new Chairman and Director
 - ✓ LGF 3 submission – details of our £229m bid, including prominent print publication in ModernGov for party conference season.
 - ✓ Housing Finance institute – pilot work and SELEP being recognised as the most ‘Housing Business Ready’ LEP in the Country.

- Digital-by-design
 - ✓ Since August 2016, the SELEP website was accessed over 6,600 times by around 4,600 users. This resulted in over 41,000 separate page views. The average users stayed on site for two minutes and forty seconds.
 - ✓ Pages giving details of LEP's meeting agendas and minutes, and our Growth Deal were the most commonly visited aside from the homepage, accounting for c.10% of all page views.
- On-going updates and improvements to SELEP website to support transparency and governance.
 - ✓ Re-structured and redesigned meetings agendas and minutes pages, easier to navigate and find historical meetings. Includes an archive, by year.
 - ✓ Additional information on SELEP Accountability Board added to site, including membership, Assurance Framework and how the Board works.
 - ✓ Business Cases for LGF schemes all published online, can circulate links to interested parties. Re-structure and redesign of Growth Deal pages underway to make it easier to find out more details of the specific projects in capital programme.
 - ✓ Regular news articles updating on LEP activity and progress, to keep the site current.

Communications

- SELEP launched digital newsletter tool in April 2016.
 - ✓ Nine editions so far, at least monthly.
 - ✓ Started with direct database of 410, increased to 558 by November – 36.1% increase in 7 months. Plus local area networks distribution.
 - ✓ Average 36% open to see more detail and 16% click on links for more information or to email/contact about a story.
- Development work underway for an interactive map to demonstrate EU spending across the area.
- Plans for revised logo and branding in conjunction with universities for March 2017.



- Lower Thames Crossing
 - ✓ Comprehensive **campaign** to encourage business engagement in Highways England Consultation January – March 2016.
 - ✓ Included development of a **website** with details of the consultation, why it matters for the South East, range of opinions, business quotes and supporters.
 - ✓ Arranged **business events** in collaboration with local Chambers of Commerce for Highways England to engage directly and for questions to be aired.
 - ✓ On-going engagement with and support for Highways England Industry Stakeholder Group meetings. Supported the group with figures, data and positioning for letters to Chancellor and others, providing the business perspective.
 - ✓ **Campaigning and lobbying** for swift decision before the end of 2016, raising profile with local MPs and Ministers. Preparation of joint-LEP letters demonstrating level of support and impact beyond Essex and Kent.
- Thames Estuary 2050 Growth Commission
 - ✓ Leading role in engaging London LEP in cross-LEP meetings and support

2017 at a glance

- Unabated **Growth Deal delivery**
- New **Strategic Economic Plan** in the Spring
 - ✓ Alignment with Industrial Strategy
 - ✓ Supported by a place-based Infrastructure and Investment Strategy and a refreshed Skills Strategy
- Renewed focus on tourism, key towns and mobile connectivity
- More collaboration with neighbouring LEPs and with London
- Launch of leading-edge utilities framework
- Revised **Terms of Reference** and Assurance Framework
 - ✓ In line with National Assurance Framework
- Completion of the SELEP team
- The most **university-friendly LEP in the country**



Thank you!

adam.bryan@essex.gov.uk

www.southeastlep.com

03330 138885

@southeastlep



Appendix: Accountability Board decisions

Meeting Date: Friday 8th April 2016

Agenda Item: Skills Capital Process and Round 4 allocations

List of recommendations:

The following projects were **agreed**;

- An allocation of £235,062.89 to Mid Kent College, Health Science Laboratory, Medway.
- An allocation of £1,360,000 to East Kent College, Extension to construction centre and related equipment.
- A variation to Colchester Institute which reduces the LEP grant from £4m to £3.640m.
- Members **agreed** the new process for distributing the remaining skills capital funds that devolves significant responsibility to the Employment and Skills Boards.

Meeting Date: Friday 8th April 2016

Agenda Item: Business Case Approvals

List of recommendations:

Members **agreed** business cases for the following schemes;

- West Kent LSTF: Tackling Congestion (£4.2m)
- Eastbourne Town Centre Movement & Access Package (£3.0m)
- Thurrock Cycle Network (£1.8m)
- Kent Rights of Way Improvement Plan (£0.8m)
- Kent Strategic Congestion Management Programme (£0.7m)

Members **agreed** the following scheme which presents high value for money with low to medium certainty of achieving this:

- Kent Sustainable Interventions Programme (£0.5m)

Members **agreed** the following scheme that had not been subject to Independent Technical Evaluation:

- A13 Widening – Project Development (£5m)

Meeting Date: Friday 8th April 2016

Agenda Item: Award Contract following ITE procurement

List of recommendations:

The Board received and noted the report and **agreed** the recommendation of the evaluation process and awarded the contract for Independent Technical Evaluation Services to the winning bidder for a period of 3 years, plus an optional extension of two further years, at a maximum total value of £450,000.

Meeting Date: Friday 10th June 2016

Agenda Item: Business Case Approvals

List of recommendations:

Members **agreed** the business cases for the following schemes :

- Purfleet Centre (£5.0m)
- Rochester Airport (£4.4m)
- A127 Kent Elms Corner Junction (£4.3m plus £0.8m vired from A127 Essential Highways Maintenance)
- Southend Central Area Transport Scheme (S-CATS) (£1.0m)

Meeting Date: Friday 10th June 2016

Agenda Item: Skills Equipment Fund approval and Skills Capital Process



List of recommendations:

Members **agreed** the allocation of £198,500 to MidKent College

Meeting Date: Friday 24th June 2016

Agenda Item: Skills Equipment Fund Approval

List of recommendations:

The following projects are before the Board for formal approval, pending SFA sign off. Members **agreed** funding of the following pending SFA assessment and sign off:

- Hadlow College, Court Lane Horticultural Nurseries , £447,000
- Hadlow College, Princess Christian Centre, £385,000
- South Essex College, Development of Construction facilities in Basildon, £366,705
- North Kent College, Thameside Jetty refurbishment, £64,500
- Chelmsford College, £57,490.50
- Plumpton College, Science and Engineering for Tree Management, £140,000
- Midkent College - Transport and logistics skills hub, £82,000

Meeting Date: Friday 24th June 2016

Agenda Item: Skills Equipment Fund Approval

List of recommendations:

The following projects are before the Board for formal approval, pending SFA sign off. Members **agreed** funding of the following pending SFA assessment and sign off:

- Hadlow College, Court Lane Horticultural Nurseries , £447,000
- Hadlow College, Princess Christian Centre, £385,000
- South Essex College, Development of Construction facilities in Basildon, £366,705
- North Kent College, Thameside Jetty refurbishment, £64,500
- Chelmsford College, £57,490.50
- Plumpton College, Science and Engineering for Tree Management, £140,000
- Midkent College - Transport and logistics skills hub, £82,000

Meeting Date: Friday 24th June 2016

Agenda Item: Business case Approvals

List of recommendations:

Members **agreed** to the funding of Sturry Link Road (£5.9m).

Agenda Item: Capital Programme Management Update

List of recommendations:

Members **agreed:**

- The re-allocation of £3m Local Growth Fund project from Westenhanger Lorry Park project to fund Ashford International Rail Connectivity (Ashford Spurs) Project
- Removal of Westenhanger Lorry Park project from the SELEP LGF programme
- The proposed change of scope to the A26 London Road/Speldhurst Road/ Yew Tree Road Junction LGF scheme to become Tunbridge Wells Junction Improvements Project

Meeting Date: Friday 16th September 2016

Agenda Item: Business Case Approvals

List of recommendations:

Members have agreed:

- To **approve** the business case for the A127 Bridge & Highway Maintenance (£1,000,000).
- To **approve** of the business case for Ashford International Rail Connectivity (£5,627,000).
- To **approve** the increase in Local Growth Fund (LGF) allocation to Ashford International Rail Connectivity (Ashford Spurs) project to £5,627,000.

Agenda Item: Skills Capital Fund Approval

List of recommendations:

Members have agreed:

- To **approve** the allocation of £116,783 to the Harlow College, E-Hub - for supporting Enterprise and Entrepreneurship.
- To **approve** the allocation of £223,798 to Canterbury College, Swale Campus Construction Extension subject to an acceptable outcome from independent technical/financial appraisal of the project.

Meeting Date: Friday 18th November 2016

Agenda Item: Business Case Approvals

List of recommendations:

To **Approve** the Business Case for A226 London Road/B255 St Clements Way (£4.2m).

To **Approve** the remaining £3.2m funding allocation to Thurrock Cycle Network project.

Agenda Item: LGF Capital Programme Management Update Report

List of recommendations:

Approve the accelerated LGF spend in 2016/17 for A226 London Road/B255 St Clements Way, Strood Town Centre, Medway Cycle Action Plan and Basildon Integrated Transport Package; and

Approve spend of £673,000 LGF on Colchester Integrated Transport Package in 2016/17.

Agenda Item: LGF Project Changes Report

List of recommendations:

Agree the reallocation of £400,000 LGF from Colchester Town Centre to Colchester LSTF project