



SOUTH EAST
LOCAL ENTERPRISE
PARTNERSHIP

The view from Government

Rt Hon Lord Henley





SOUTH EAST
LOCAL ENTERPRISE
PARTNERSHIP

Emerging Local Industrial Strategies

Andrew Carter, Centre for Cities

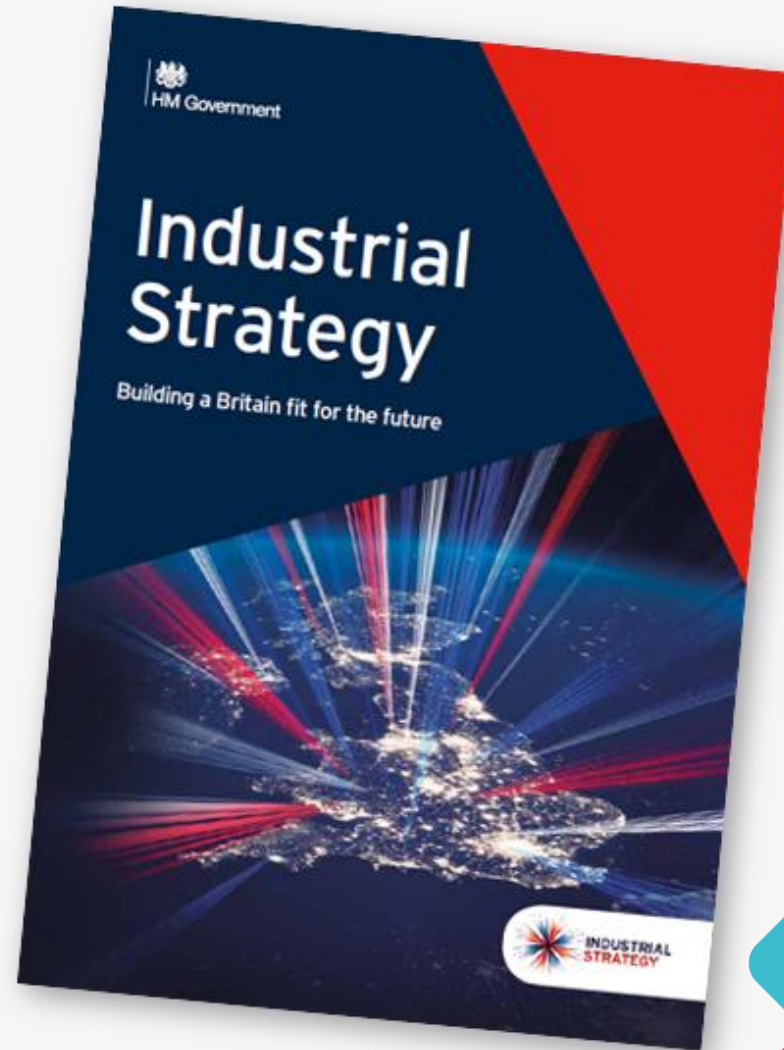




SOUTH EAST
LOCAL ENTERPRISE
PARTNERSHIP

Our Local Industrial Strategy

Helen Russell
Strategy & Intelligence
South East LEP



Local Industrial Strategies?

- Industrial Strategy launched by HMG in November 2017
- Strategy focused on high productivity and growth
- Evidence - Focus - Collaborate - Prioritise - Evaluate
- Priorities are determined locally & then co-designed and owned with Government





SOUTH EAST
LOCAL ENTERPRISE
PARTNERSHIP

National progress so far



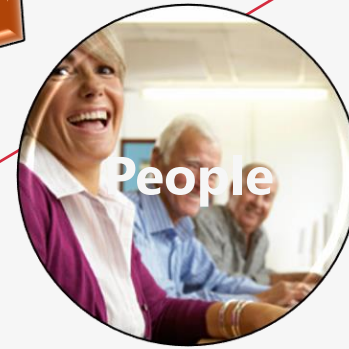
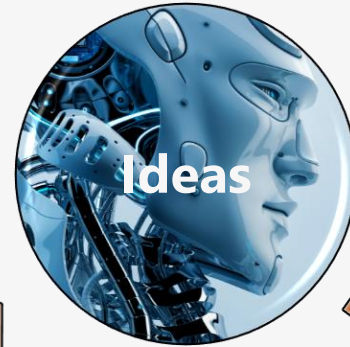
- **West Midlands** focuses on strengths in research, manufacturing and transport innovation
- **Greater Manchester** focuses on health innovation, digitalisation, and a commitment to carbon neutral living by 2038
- Very closely aligned to national guidance and the 5 foundations of productivity
- A few more are close to being agreed but the majority of remaining LEPs working to December deadline



SOUTH EAST
LOCAL ENTERPRISE
PARTNERSHIP

Foundations & Challenges

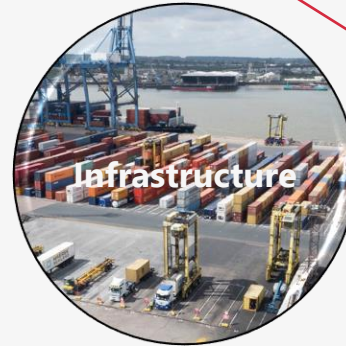
**Artificial
Intelligence
& Data**



**Ageing
Society**



**Future of
Mobility**



**Clean
Growth**





SOUTH EAST
LOCAL ENTERPRISE
PARTNERSHIP

Smarter, Faster, Together: our starting point

Smarter

How do we drive innovation, increase technology adoption and create the skills and capabilities that we need to respond to the 'grand challenges' and thrive in a competitive, digitally enabled world?

Faster

How do we secure the infrastructure we need to support a growing and changing population – and the demands of an evolving economy, and how do we drive the pace and quality of housing delivery?

Together

How do we ensure that everyone contributes to and benefits from productivity growth?



SOUTH EAST
LOCAL ENTERPRISE
PARTNERSHIP



Opportunities

- Accelerating **housing** growth & focusing on complementary infrastructure development
- Maximising and fully understanding the economic benefits of our proximity to **London**
- Targeting our investment to support the growth of our principal **economic assets**
- Harnessing our specialisms and our **sectoral strengths**
- Working more closely with our 9 **universities** & further education to align skills provision with centres of growth
- Capitalise on a new movement with other **Southern LEPs**

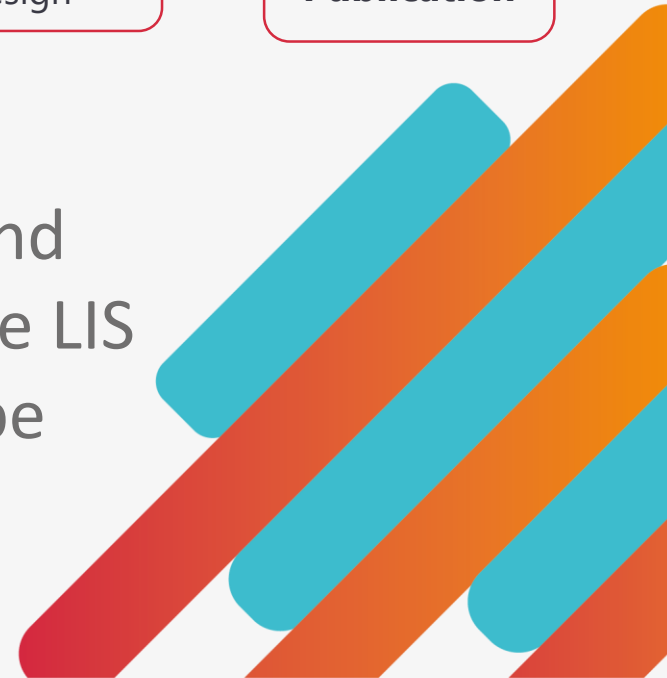


Slido #3: Topics for a LIS?

- **AI & Data** economy
 - **Clean Growth**
 - Economic relationship with **London**
 - Addressing the **infrastructure** deficit
 - **Brexit** impact on ports
 - Future of **mobility**
 - Innovation
 - Raising basic **skills** levels
 - Equipping to compete in the **digital** revolution
 - Capitalising on transformative investments (e.g. Lower Thames Crossing)
 - Reinventing business support
 - Corridor-focused interventions (e.g. **Thames Estuary**)
 - Garden communities and/or shared **housing** ambition
 - Ageing Society
 - High Streets and **Town Centres**
 - **Business Workspace** requirements
 - Natural capital
 - Supporting the creative economy
 - Rural inclusion
- 
- A decorative graphic in the bottom right corner consisting of several overlapping diagonal bars in red, orange, and teal colors, mirroring the colors in the logo.

SELEP LIS Engagement



- Currently focused on reviewing evidence, filling gaps and identifying strengths and potential interventions for the LIS
 - Engagement with local and national stakeholders will be critical as we move into stages 2 and 3
- 



SOUTH EAST
LOCAL ENTERPRISE
PARTNERSHIP

Thank you

Contacts:

Helen Russell

Helen.russell@southeastlep.com

Sharon Spicer

Sharon.spicer@southeastlep.com

