

SMARTER . FASTER . TOGETHER

SELEP AREA MAP



Our Economic Strategy Statement focuses on priorities shared across the South East and those where we can, by working together, make the biggest difference.

Our commitment is to work for a more productive and prosperous south east in which everyone has the opportunity to succeed.



OUR AMBITIONS

WORK SMARTER:
Increasing the productivity of the South East LEP area

DELIVER FASTER:
Accelerating housing and infrastructure delivery to meet planned growth

WORK BETTER TOGETHER:
Collaborating across the Greater South East, with Government and with business



PRIORITY 1

CREATING IDEAS AND ENTERPRISE

Creating, adapting and adopting new ideas is at the heart of our ambition for a 'smarter' economy. This means supporting our innovative capacity in our 'leading edge' businesses – it also means increasing the opportunities for creativity across the economy, enabling businesses with the potential for growth to expand

PRIORITY 2

DEVELOPING TOMORROW'S WORKFORCE

A skilled workforce will be vital in delivering the productivity gains that this strategy demands. But higher skills are also the route to better pay, better jobs, and better progression in work.



PRIORITY 3

ACCELERATING INFRASTRUCTURE

To deliver our ambitions for a smarter faster economy, we must ensure that we secure the right infrastructure to support future growth. Through our growth deal, we have developed a strong track record, although infrastructure funding gaps remain significant.



PRIORITY 4

CREATING PLACES

The scale of growth that the South East will see over the coming decade is significant, and some of the changes facing businesses and people in work will be transformational. But greater productivity is only useful if it improves living standards and the communities within which we live: as well as delivering 'growth', we need to create places to which South East residents and businesses aspire.

PRIORITY 5

WORKING TOGETHER

While the South East LEP covers a large and complex geography in its own right, it is by no means isolated. Our links to London and other parts of the Greater South East are vital, and we will need to build on our -wider regional connections.



Follow us and be part of the journey:
SMARTER, FASTER, TOGETHER

@southeastlep

www.linkedin.com/company/south-east-lep

www.southeastlep.com

hello@southeastlep.com

BUSINESS PARKS

- ESSEX

 - 1 Harlow Enterprise Zone; including Harlow Science Park, Kao Park, Templefields
 - 2 Chesterford Research Park
 - 3 Southend Airport Business Park
 - 4 Stansted Business Park
 - 5 High House Production Park
 - 6 Thames Enterprise Park
 - 7 Knowledge Gateway, Colchester
 - 8 Skyline 120 & Horizon 120
- KENT

 - 9 North Kent Enterprise Zone; Kent Medical Campus
 - 10 North Kent Enterprise Zone; Innovation Park Medway
 - 11 Discovery Park Enterprise Zone
 - 12 Kings Hill
 - 13 Eureka Park
 - 14 Crossways
 - 15 Prologis Park
 - 16 The Bridge
 - 17 Manston Business Park
 - 18 EuroKent Business Park
 - 19 Waterbrook Park
 - 20 Eurolink
 - 21 Kemsley Fields
 - 22 London Medway Commercial Park
 - 23 Kent Science Park
 - 24 Altira Business Park
- EAST SUSSEX

 - 25 Swallow Business Park
 - 26 Bexhill Enterprise Park
 - 27 Newhaven Enterprise Zone
 - 28 Sovereign Harbour Innovation Park
 - 29 North Queensway Innovation Park

BUSINESS

- ESSEX

 - 1 Hutchison Ports Harwich
 - 2 DP World
 - 3 Ford, Dutton Research Centre
 - 4 Case New Holland
 - 5 Public Health England
 - 6 Teledyne e2v
 - 7 BAE Systems
 - 8 Leonardo UK Ltd
 - 9 Olympus Keymed
 - 10 Think BDW
 - 11 Illumina
- KENT

 - 25 Peel Ports
 - 26 Hutchison Ports
 - 27 East Malling NIAB Research Centre
 - 28 Maidstone Studios
 - 29 Pfizer
 - 30 BAE Systems
 - 31 Saga
 - 32 P&O Ferries
 - 33 Abbott Laboratories
 - 34 Laing O'Rourke
 - 35 Shepherd Neame
 - 36 Gallagher Group
 - 37 Chapel Down Winery, Tenterden
 - 38 Biddenden Vineyards
 - 39 Cummins Power Generation
 - 40 Motor Sport Vision
 - 41 FM Conway
 - 42 Axa PPP
 - 43 Church & Dwight
- EAST SUSSEX

 - 34 Trifast plc
 - 35 Hastings Direct
 - 36 Harvey & Son (Lewes) Ltd
 - 37 Gardners Books
 - 38 Jemsons of Rye
 - 39 Rathfinny Wine Estate

EDUCATION

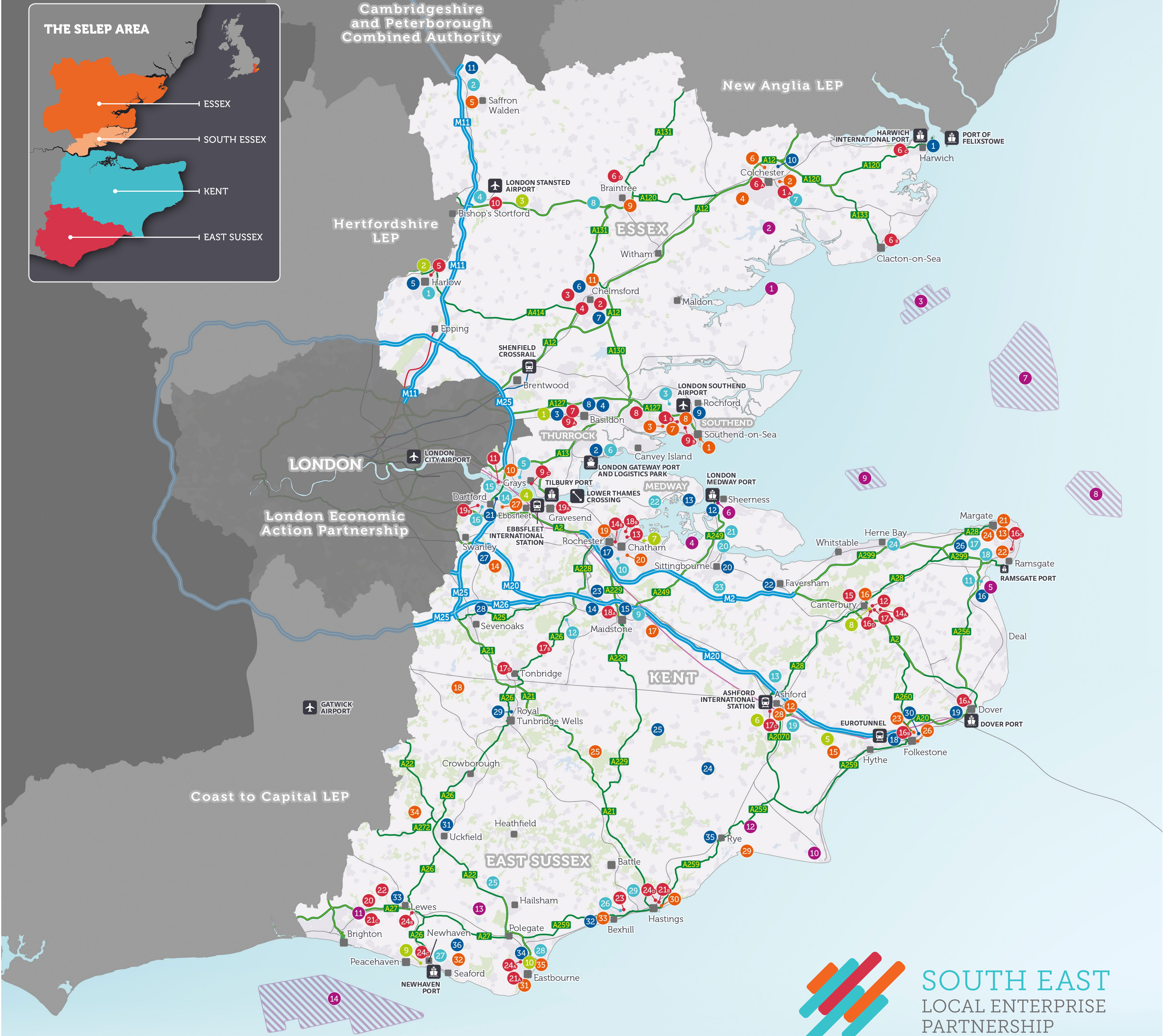
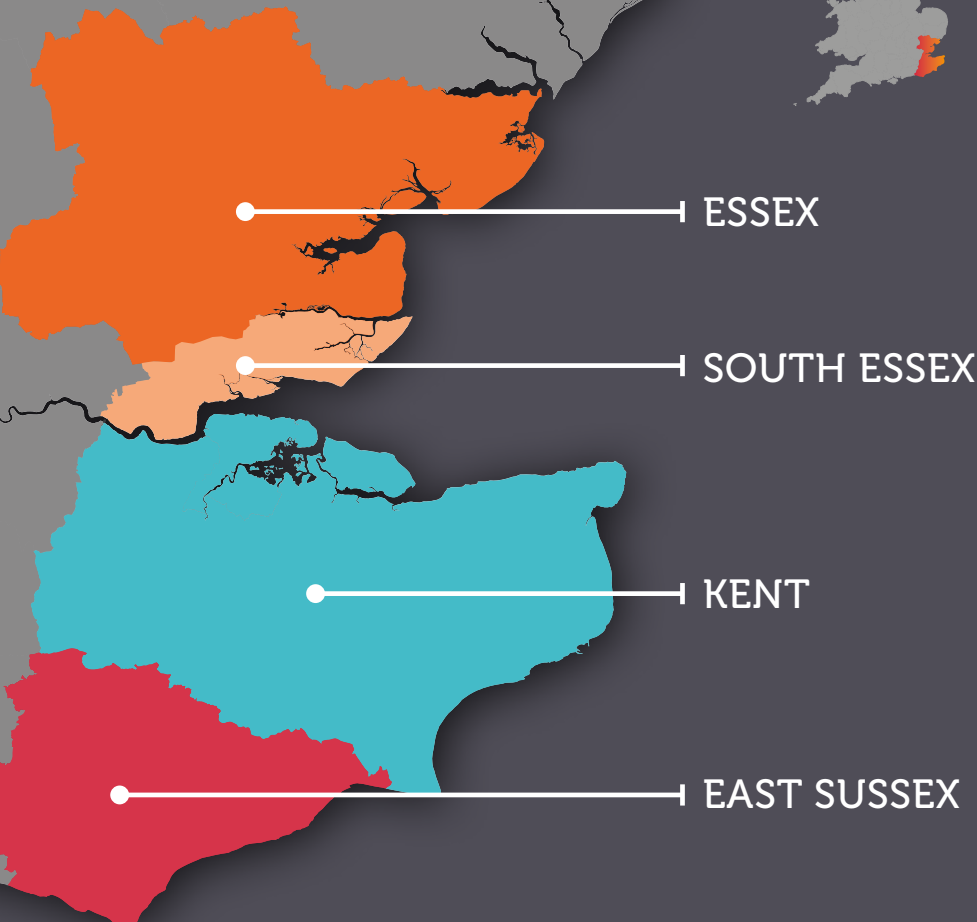
- ESSEX

 - 1 University of Essex: (A) Colchester Campus (B) Southend Campus
 - 2 Anglia Ruskin University
 - 3 Writtle College
 - 4 Chelmsford College
 - 5 Harlow College
 - 6 Colchester Institute: (A) Colchester Campus (B) Clacton Campus (C) Energy Skills Centre (D) Innovation Centre
 - 7 Prospects College of Advanced Technology (PROCAT)
 - 8 USP College
 - 9 South Essex College: (A) Basildon (B) Southend (C) Thurrock
 - 10 Stansted Airport College (Harlow College)
 - 11 National College for the Creative Industries
- KENT

 - 12 Canterbury Christ Church University
 - 13 Universities at Medway: University of Greenwich: University of Kent: Canterbury Christ Church University
 - 14 University for the Creative Arts: (A) Canterbury Campus (B) Medway Campus
 - 15 University of Kent: (A) Dover Campus (B) Folkestone Campus (C) Broadstairs Campus (D) Canterbury Campus
 - 16 Hadlow Group: (A) Canterbury (B) Hadlow (C) Ashford (D) Tonbridge
 - 17 Mid Kent College: (A) Maidstone (B) Medway
 - 18 North Kent College: (A) Gravesend (B) Dartford
- EAST SUSSEX

 - 20 University of Sussex
 - 21 University of Brighton: (A) Eastbourne Campus (B) Hastings Campus (C) Falmer Campus
 - 22 Plumpton College
 - 23 Bexhill College
 - 24 East Sussex College: (A) Eastbourne (B) Lewes (C) Newhaven (D) Hastings

THE SELEP AREA



CULTURAL & LEISURE

- ESSEX

 - 1 Southend Pier & Adventure Island
 - 2 Firstsite
 - 3 Hadleigh Park
 - 4 Colchester Zoo
 - 5 Audley End House
 - 6 Colchester Castle
 - 7 Metal & Netpark
 - 8 Radical Essex, Focal Point Gallery
 - 9 Freeport Braintree Outlet
 - 10 Lakeside Shopping Centre
 - 11 Bond Street, Chelmsford
- KENT

 - 12 Jasmin Vardimon Dance Laboratory
 - 13 Turner Contemporary Margate
 - 14 Brands Hatch
 - 15 Port Lympne Reserve
 - 16 Canterbury Cathedral
 - 17 Leeds Castle
 - 18 Hever Castle
 - 19 Historic Dockyard Chatham
 - 20 Nucleus Arts
 - 21 Resort Artist Studios Margate
 - 22 Meltdowns Foundry Ramsgate
 - 23 Creative Quarter Folkestone
 - 24 Dreamland, Margate
 - 25 Bedgebury Pinetum
 - 26 Folkestone Harbour Arm
 - 27 Bluewater Shopping & Leisure
 - 28 Ashford Designer Outlet
- East Sussex

 - 29 Camber Sands
 - 30 Jerwood Gallery
 - 31 Townner Gallery
 - 32 Seven Sisters Country Park
 - 33 De La Warr Pavilion
 - 34 Sheffield Park and Garden
 - 35 The Beacon Shopping Centre

ENERGY

- ESSEX

 - 1 Bradwell Nuclear Power
 - 2 Langenhoe Solar Farm
 - 3 Gunfleet Sands
- KENT

 - 4 Orchard Community Solar Energy
 - 5 Combined Heat and Power plant Kent (Estover Energy)
 - 6 Port of Sheerness Wind Farm
 - 7 London Array Offshore Wind Farm
 - 8 Thames Offshore Wind Farm
 - 9 Kentish Flats Offshore Wind Farm
 - 10 Dungeness B Nuclear Power Station
- East Sussex

 - 11 The Keep biomass boiler & building-integrated solar
 - 12 Little Cheyne Court on-shore wind farm
 - 13 Berwick Solar Farm
 - 14 Rampton Southern Array Offshore Wind Farm

DEVELOPMENT SITES

- ESSEX

 - 1 Dunton Hills Garden Village
 - 2 Harlow and Gilston Garden Town
 - 3 North Essex Garden Communities
- KENT

 - 4 Ebbsfleet Garden City
 - 5 Otterpool Park Garden Town
 - 6 Chilmington Garden Village
 - 7 Rochester Riverside
 - 8 Mountfield Park
- EAST SUSSEX

 - 9 Newhaven EZ
 - 10 Devonshire Park

Examples listed here are illustrative of economic themes and features across our area. This is by no means an exhaustive list. If you would like further information please contact us: hello@southeastlep.com