

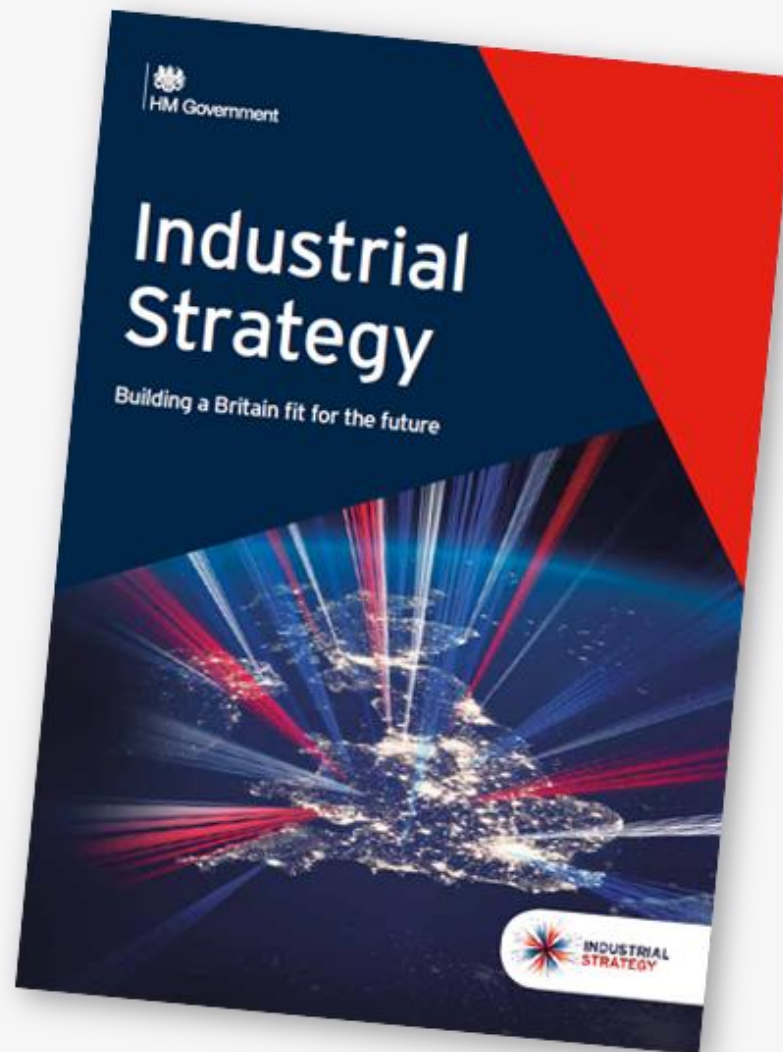


SOUTH EAST  
LOCAL ENTERPRISE  
PARTNERSHIP

---

# Local Industrial Strategy

Adam Bryan  
Managing Director  
Strategic Board  
22<sup>nd</sup> March 2019





SOUTH EAST  
LOCAL ENTERPRISE  
PARTNERSHIP

# Contents



- What's a 'Local Industrial Strategy'?
- What have we done already?
- The size of the task
- Progress in other LEPs
- Our approach
- Resourcing it
- Questions





SOUTH EAST  
LOCAL ENTERPRISE  
PARTNERSHIP

## What's a Local Industrial Strategy?

- UK Industrial Strategy launched by HMG in November 2017
- Local Industrial Strategies required by March 2020
- Strengthened LEPs
- UK Shared Prosperity Fund
- Boost **productivity** by backing businesses to create good jobs and increase the earning power of people throughout the UK
- Four **Grand Challenges**: Artificial Intelligence and Data; Ageing Society; Clean Growth; and Future of Mobility





**SOUTH EAST**  
LOCAL ENTERPRISE  
PARTNERSHIP

# What have we done already?

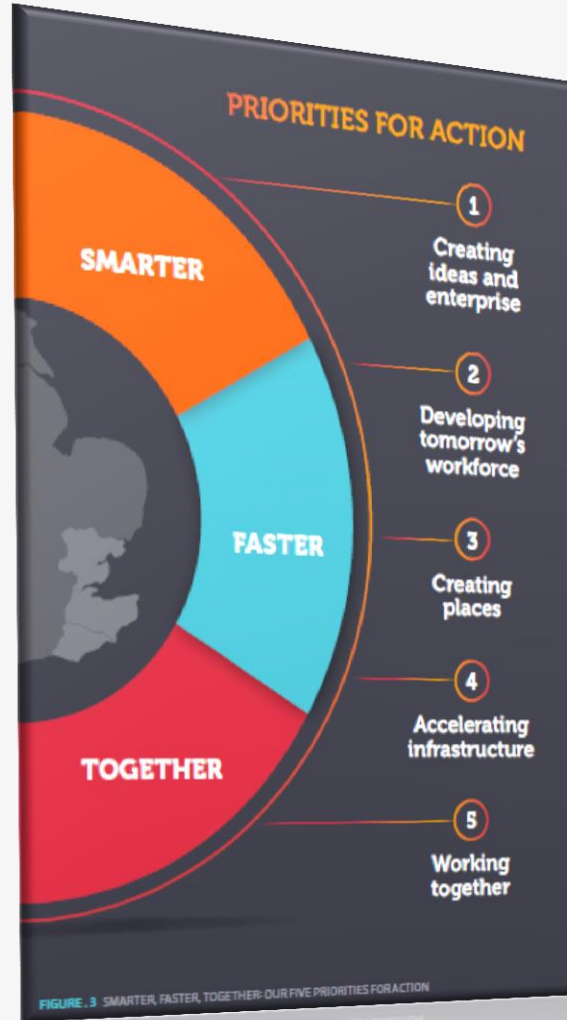


FIGURE 3 SMARTER, FASTER, TOGETHER: OUR FIVE PRIORITIES FOR ACTION



THE UK'S ONLY RAIL CONNECTION TO CONTINENTAL EUROPE

## The size of the task

- HMG **Policy Prospectus** released in October 2018
  - ✓ Long-term
  - ✓ Based on clear evidence
  - ✓ Coordinate local economic policy
  - ✓ Inform local choices
  - ✓ Prioritise local action
  - ✓ Inform decisions at the national level
  - ✓ Strategic overview to inform LEP's approach to any future funding deployed through the area
- 'LISs will need to be a product of extensive consultation [...] and should also set out how places can best work with Government to address shared priorities



## The size of the task

- **Evidence** – set out a robust and open evidence base
- **Focus** – build on local strengths; Grand Challenges; foundations of productivity
- **Collaboration** – make clear how LEPs will work in partnership with public and private stakeholders to achieve their ambitions
- **Prioritisation** – prioritise specific, achievable and long-term ambitions
- **Evaluation** – set out clear plans to evaluate progress



## Progress in other LEPs

- Greater Manchester and West Midlands shortly to launch – notable support from HMG officials
- Wave 1 and Wave 2 LISs well underway
- Majority of LEPs in Wave 3
- Ambition to produce evidence bases in early 2019. Ground to make up



SOUTH EAST  
LOCAL ENTERPRISE  
PARTNERSHIP



## Our approach

- **Smarter Faster Together** provides a starting point
- Local approaches to **productivity strategies** providing the foundation
- Commission around **evidence base** production
- Formal consultation on the evidence base
- Theme-based approaches to write up and action planning – no single commission
- Driven by the **partnership**





**SOUTH EAST**  
LOCAL ENTERPRISE  
PARTNERSHIP

## Possible structures...





## Next steps

Step	Timeline
Recruit to team	April, May
Procure consultants for the production of the evidence base	April
Consideration of draft evidence base	June Strategic Board*
Public consultation	Summer
Kick off theme-based work packages	Autumn
Begin assimilation of final document	December
Consideration of first draft LIS	March 2020 Strategic Board